

# Frosty Folks

By Jan Shade Beach



Quilt Design by Heidi Pridemore

2 ply  
flannel

## Quilt 2

Skill Level: Beginner

A Free Project Sheet From



Henry Glass & Co., Inc.



facebook

Finished Quilt Size: 51" x 63"  
49 West 37th Street, New York, NY 10018  
tel: 212-686-5194 fax: 212-532-3525  
Toll Free: 800-294-9495  
www.henryglassfabrics.com

# FROSTY FOLKS

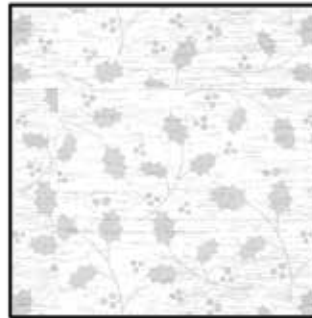
Quilt 2

Finished Quilt Size: 51" x 63"

## Fabrics in the Collection



Panel - Multi  
F6737-98



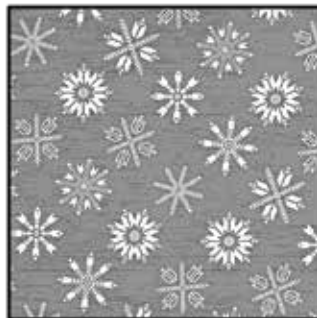
Holly - White/Gray  
F6738-90



Snowflake - White/Gray  
F6739-9



Snowflake - Red  
F6739-88



Snowflake - Gray  
F6739-90



Packed Snowmen - Multi  
F6740-89



Nordic Stripe - Red  
F6741-8



Forest Scenic - Gray  
F6742-90



Mittens - White/Red  
F6743-8



Mittens - Gray  
F6743-98



Novelty Stripe - Multi  
F6744-89

Select Fabric from  
Fluffy Solids Collection



Fluffy - Red

# FROSTY FOLKS

## Quilt 2

### Materials

½ yard	Forest Scenic - Gray (A)	F6742-90
1 ¼ yards	Novelty Stripe - Multi (B)	F6744-89
½ yard	Snowflake - Gray (C)	F6739-90
⅞ yard	Snowflake - Red (D)	F6739-88*
¼ yard	Packed Snowmen - Multi (E)	F6740-89
¼ yard	Holly - White/Gray (F)	F6738-90
½ yard	Fluffy Red (G)	Fluffy Red
⅞ yard	Mittens - White/Red (H)	F6743-8
3 ⅓ yards	Mittens - Gray (Backing)	F6743-98

\*Includes binding

### Cutting Instructions

Please note: all strips are cut across the width of fabric (WOF) from selvage to selvage edge unless otherwise noted.

#### From the Forest Scenic - Gray (A), cut:

- (1) 12 ½" x 40 ½" WOF strip.

#### From the Novelty Stripe - Multi (B), cut:

- (2) 8 ½" x 40 ½" LOF strips, each centered on the large stripe.

#### From the Snowflake - Gray (C), cut:

- (6) 2" x 40 ½" WOF strips.

#### From the Snowflake - Red (D), cut:

- (5) 2" x WOF strips. Sew the strips together end to end with diagonal seams and cut (2) 2" x 52 ½" strips and (2) 2" x 43 ½" strips.
- (6) 2 ½" x WOF strips for the binding.

#### From the Packed Snowmen - Multi (E), cut:

- (1) 6 ½" x WOF strip. Sub-cut strip into (2) 6 ½" squares and (4) 5 ½" x 6 ½" strips.

#### From the Holly - White/Gray (F), cut:

- (3) 2 ½" x WOF strips.

#### From the Fluffy Red (G), cut:

- (3) 2 ½" x WOF strips.
- (2) 2 ½" x 40 ½" WOF strips.

#### From the Mittens - White/Red (H), cut:

- (3) 4 ½" x WOF strips. Sew the strips together end to end with diagonal seams and cut (2) 4 ½" x 55 ½" strips.
- (3) 4 ½" x WOF strips. Sew the strips together end to end with diagonal seams and cut (2) 4 ½" x 51 ½" strips.

#### From the Mittens - Gray (Backing), cut:

- (2) 59" x WOF strips for the backing. Sew the strips together and trim to make the 59" x 71" back.

### Sewing Instructions

1. Sew (1) 2 ½" x WOF Fabric F strip to each side of (1) 2 ½" x WOF Fabric G strip lengthwise to make (1) FGF strip set (Fig. 1).

2. Cut the FGF strip set into (16) 2 ½" x 6 ½" FGF strips (Fig. 2).

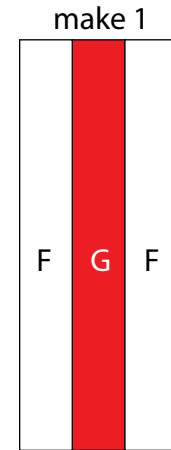


Fig. 1

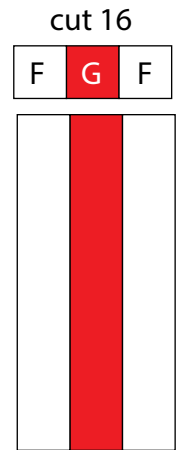


Fig. 2

3. Sew (1) 2 ½" x WOF Fabric G strip to each side of (1) 2 ½" x WOF Fabric F strip lengthwise to make (1) GFG strip set (Fig. 3).

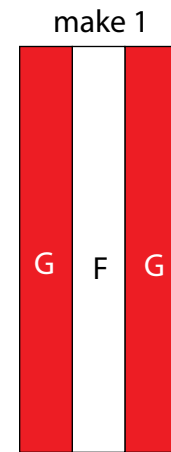


Fig. 3

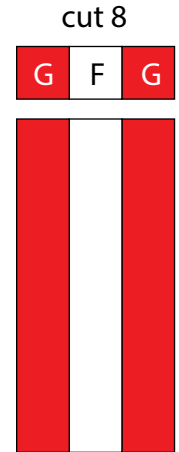


Fig. 4

4. Cut the GFG strip set into (8) 2 ½" x 6 ½" GFG strips (Fig. 4).

5. Sew (1) FGF strip to the top and to the bottom of (1) GFG strip to make (1) Unit 1 (Fig. 5). Repeat to make (8) Unit 1's total.

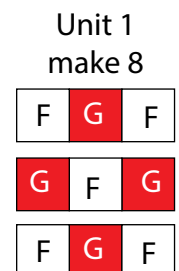


Fig. 5

6. Sew (1) Unit 1, (1) 5 ½" x 6 ½" Fabric E strip, (1) Unit 1, (1) 6 ½" Fabric E square, (1) Unit 1, (1) 5 ½" x 6 ½" Fabric E strip and (1) Unit 1 together in that order to make (1) Pieced Row (Fig. 6). Repeat to make a second Pieced Row.

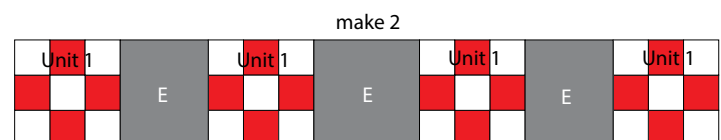


Fig. 6

# FROSTY FOLKS

## Quilt 2

### Quilt Top Assembly

(Refer to the *Quilt Layout while assembling.*)

7. Sew (1) 2" x 40 1/2" Fabric C strip to the top and to the bottom of (1) 8 1/2" x 40 1/2" Fabric B strip lengthwise to make Row One. Repeat to make Row Five.

8. Sew (1) 2 1/2" x 40 1/2" Fabric G strip to the top and to the bottom of (1) 12 1/2" x 40 1/2" Fabric A strip lengthwise. Sew (1) 2" x 40 1/2" Fabric C strip to the top and bottom of the resulting strip to make Row Three.

9. Sew Row One, (1) Pieced Row, Row Three, (1) Pieced Row, Row Five together in that order to make the Center Block.

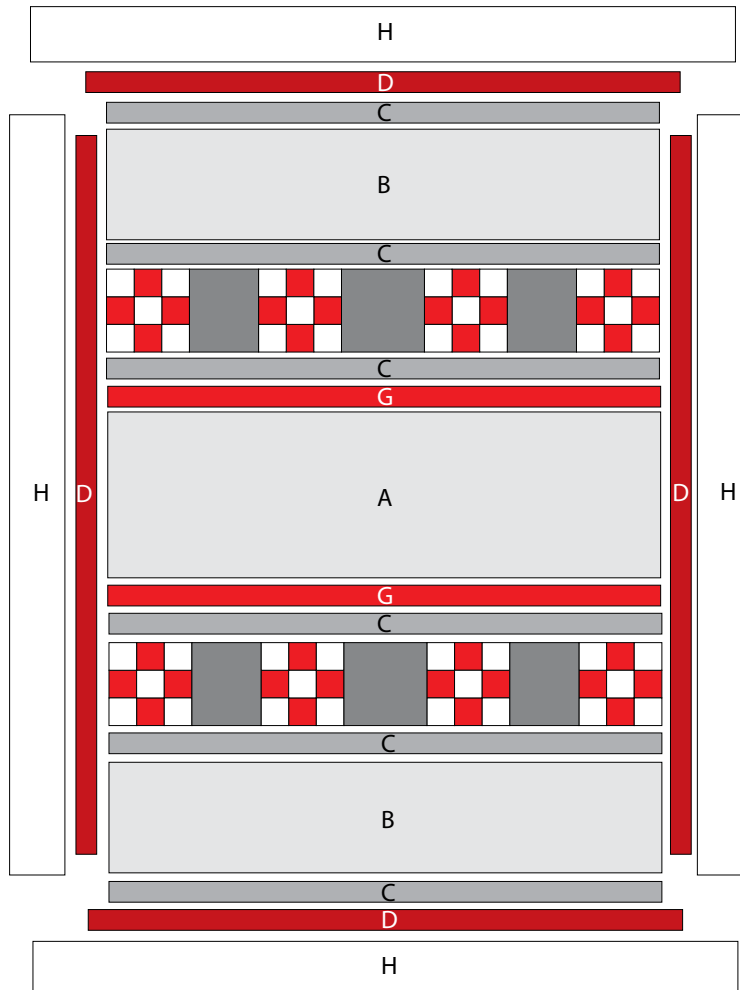
10. Sew (1) 2" x 52 1/2" Fabric D strip to each side of the Center Block. Sew (1) 2" x 43 1/2" Fabric D strip to the top and to the bottom of the Center Block.

11. Sew (1) 4 1/2" x 55 1/2" Fabric H strip to each side of the Center Block. Sew (1) 4 1/2" x 51 1/2" Fabric H strip to the top and to the bottom of the Center Block to make the quilt top.

12. Layer and quilt as desired.

13. Sew the (6) 2 1/2" x WOF Fabric D strips together, end to end with 45-degree seams, to make the binding. Fold this long strip in half lengthwise with wrong sides together and press.

14. Bind as desired.



Quilt Layout

Every effort has been made to ensure that all projects are error free. All the information is presented in good faith, however no warranty can be given nor results guaranteed as we have no control over the execution of instructions. Therefore, we assume no responsibility for the use of this information or damages that may occur as a result. When errors are brought to our attention, we make every effort to correct and post a revision as soon as possible. Please make sure to check [www.henryglassfabrics.com](http://www.henryglassfabrics.com) for pattern updates prior to starting the project. We also recommend that you test the project prior to cutting for kits. Finally, all free projects are intended to remain free to you and are not for resale.