

JOURNEY TO VERSAILLES

By Mary Jane Carey



Quilt 2

Skill Level: Advanced Beginner

A Free Project Sheet From



Henry Glass & Co., Inc.



facebook

Finished Quilt Size: 35" x 47"
49 West 37th Street, New York, NY 10018
tel: 212-686-5194 fax: 212-532-3525
Toll Free: 800-294-9495
www.henryglassfabrics.com

JOURNEY TO VERSAILLES

Finished Quilt Size: 35" x 47"

Quilt 2

Fabrics in the Collection



Calico - Red
8596-88



Calico - Abalone Red
8596-48



Vine - Red
8595-88



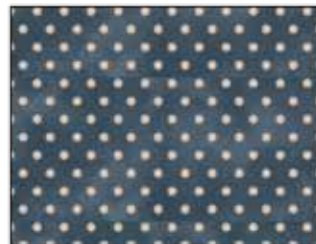
Vine - Blue
8595-77



Vine - Abalone
8595-44



Large Dot - Red
8594-84



Large Dot - Blue
8594-77



Large Dot - Abalone Red
8594-88



Small Dot - Red
8593-88



Small Dot - Abalone Blue
8593-47



Small Dot - Khaki
8593-33



Paisley - Red
8592-88



Paisley - Blue
8592-77



Paisley - Khaki
8592-33



Master Floral - Red
8591-88



Master Floral - Blue
8591-77



Master Floral - Abalone
8591-44

JOURNEY TO VERSAILLES Quilt 2

Materials

1 1/8 yards	Small Dot - Abalone Blue (A)	8593-47*
1/8 yard	Large Dot - Blue (B)	8594-77
1/8 yard	Large Dot - Red (C)	8594-84
1/3 yard	Master Floral - Red (D)	8591-88
1/4 yard	Master Floral - Blue (E)	8591-77
2/3 yard	Paisley - Blue (F)	8592-77
1/3 yard	Small Dot - Khaki (G)	8593-33
1 2/3 yards	Vine - Blue (Backing)	8595-77

*Includes binding

Quilt Cutting Instructions

Please note: all strips are cut across the width of fabric (WOF) from selvage to selvage unless otherwise noted.

From the Small Dot - Abalone Blue (A), cut:

- (4) 1 1/2" x WOF strips.
- (1) 4 1/2" x WOF strip. Sub-cut strip into (20) 1 1/2" x 4 1/2" strips.
- (5) 2 1/2" x WOF strips. Sub-cut strips into (38) 2 1/2" x 4 1/2" strips.
- (5) 2 1/2" x WOF strips for the binding.

From the Large Dot - Blue (B), cut:

- (2) 1 1/2" x WOF strips.

From the Large Dot - Red (C), cut:

- (2) 1 1/2" x WOF strips.

From the Master Floral - Red (D), cut:

- (3) 2 1/2" x WOF strips. Sub-cut strips into (48) 2 1/2" squares.

From the Master Floral - Blue (E), cut:

- (1) 1 1/2" x WOF strip. Sub-cut strip into (16) 1 1/2" x 2 1/2" strips.
- (1) 1 1/2" x WOF strip. Sub-cut strip into (4) 1 1/2" squares.
- (1) 2 1/2" x WOF strip. Sub-cut strip into (15) 2 1/2" squares.

From the Paisley - Blue (F), cut:

- (2) 4 1/2" x 39 1/2" WOF strips.
- (2) 4 1/2" x 35 1/2" WOF strips.

From the Small Dot - Khaki (G), cut:

- (2) 2" x 36 1/2" WOF strips.
- (2) 2" x 27 1/2" WOF strips.

From the Vine - Blue (Backing), cut:

- (1) 43" x 55" strip for the back.

Sewing Instructions

1. Sew (1) 1 1/2" x WOF Fabric A strip and (1) 1 1/2" x WOF Fabric C strip together lengthwise to make (1) AC strip set (Fig. 1). Repeat to make a second AC strip set.

make 2

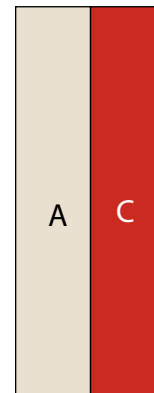


Fig. 1

2. Cut the AC strip sets into (48) 1 1/2" x 2 1/2" AC strips (Fig. 2).

cut 48



Fig. 2

3. Sew (1) 1 1/2" x WOF Fabric B strip and (1) 1 1/2" x WOF Fabric A strip together lengthwise to make (1) BA strip set (Fig. 3). Repeat to make a second BA strip set.

make 2

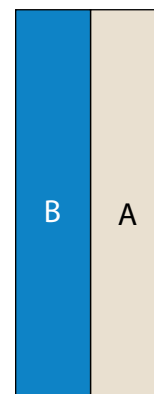


Fig. 3

4. Cut the BA strip sets into (48) 1 1/2" x 2 1/2" BA strips (Fig. 4).

cut 48



Fig. 4

5. Sew (1) AC strip to the top of (1) BA strip to make (1) Unit 1 (Fig. 5).

Unit 1
make 48



Fig. 5

6. Sew (2) 2 ½” Fabric D squares and (2) Unit 1’s together to make (1) Block One (Fig. 6). Repeat to make (24) Block Ones total.

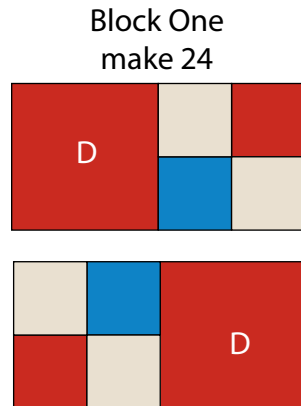


Fig. 6

7. Follow Figure 7 and sew (2) 1 ½” Fabric E squares, (4) 1 ½” x 4 ½” Fabric A strips and (3) 1 ½” x 2 ½” Fabric E strips together to make (1) Top/Bottom Row. Repeat to make a second Top/Bottom Row.

8. Follow Figure 8 and sew (2) 1 ½” x 4 ½” Fabric A strips (4) Block Ones and (3) 2 ½” x 4 ½” Fabric A strips together to make (1) Block Row. Repeat to make (6) Block Rows total.

9. Follow Figure 9 and sew (2) 1 ½” x 2 ½” Fabric E strips, (4) 2 ½” x 4 ½” Fabric A strips and (3) 2 ½” Fabric E squares together to make (1) Sashing Row. Repeat to make (5) Sashing Rows total.

Quilt Top Assembly

(Refer to the Quilt Layout while assembling.)

10. Sew the (6) Block Rows and (5) Sashing Rows together, alternating them, to make the quilt top.

11. Sew (1) Top/Bottom Row to the top and to the bottom of the quilt top.

12. Sew (1) 2” x 36 ½” Fabric G strip to each side of the quilt top. Sew (1) 2” x 27 ½” Fabric G strip to the top and to the bottom of the quilt top.

13. Sew (1) 4 ½” x 39 ½” Fabric F strip to each side of the quilt top. Sew (1) 4 ½” x 35 ½” Fabric F strip to the top and to the bottom of the quilt top.

14. Layer and quilt as desired.

15. Sew the (5) 2 ½” x WOF Fabric A strips together, end to end with 45-degree seams, to make the binding. Fold this long strip in half lengthwise with wrong sides together and press.

16. Bind as desired.

Top/Bottom Rows
make 2



Fig. 7

Block Rows
make 6

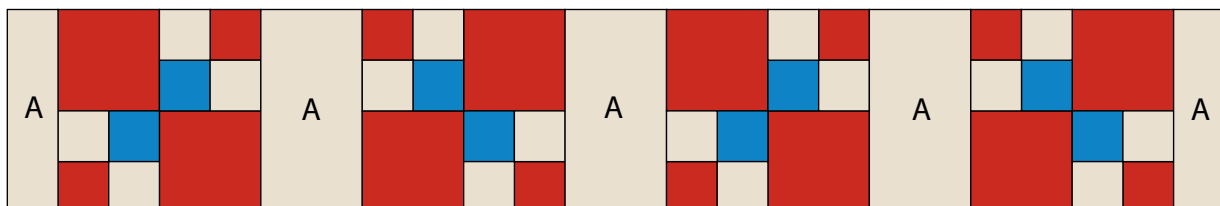


Fig. 8

Sashing Rows
make 5

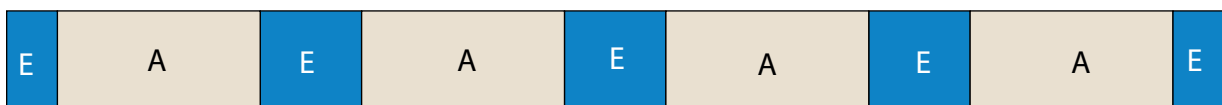
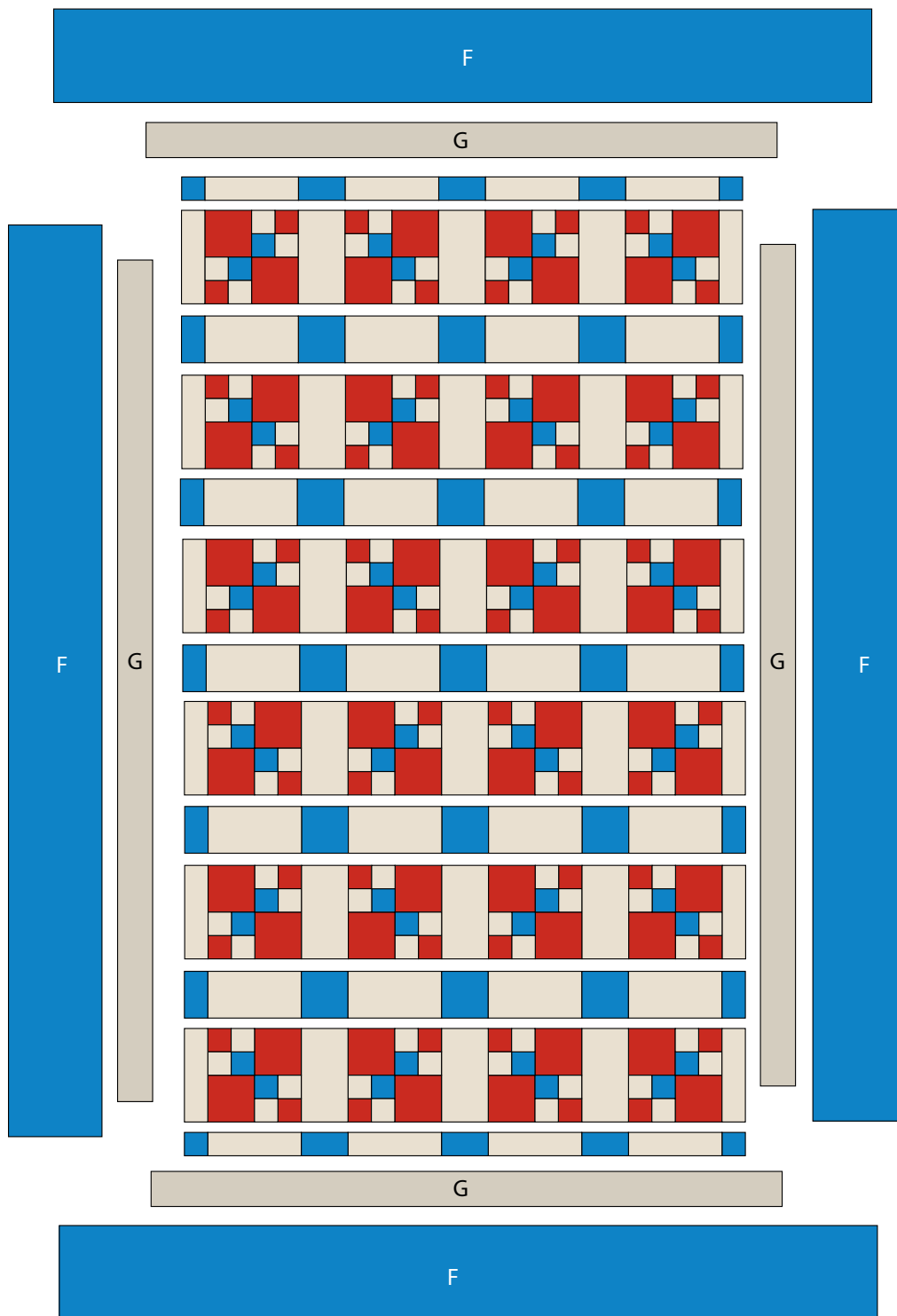


Fig. 9

JOURNEY TO VERSAILLES Quilt 2



Quilt Layout

Every effort has been made to ensure that all projects are error free. All the information is presented in good faith, however no warranty can be given nor results guaranteed as we have no control over the execution of instructions. Therefore, we assume no responsibility for the use of this information or damages that may occur as a result. When errors are brought to our attention, we make every effort to correct and post a revision as soon as possible. Please make sure to check www.henryglassfabrics.com for pattern updates prior to starting the project. We also recommend that you test the project prior to cutting for kits. Finally, all free projects are intended to remain free to you and are not for resale.