

# LET'S BUILD

By Nidhi Wadhwa

A Free Project Sheet  
NOT FOR RESALE



Quilt Design by Heidi Pridemore

Quilt 1

Skill Level: Advanced Beginner

 Henry Glass & Co., Inc.



facebook

Finished Quilt Size: 54" x 62"  
49 West 37th Street, New York, NY 10018  
tel: 212-686-5194 fax: 212-532-3525  
Toll Free: 800-294-9495  
www.henryglassfabrics.com

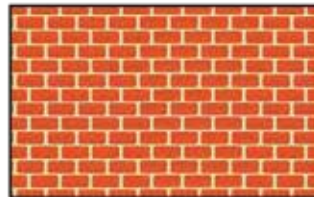
# LET'S BUILD Quilt 1

Finished Quilt Size: 54" x 62"

## Fabrics in the Collection



36" Construction Panel - Blue  
1150P-77



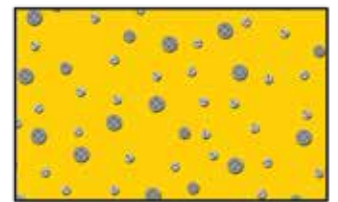
Bricks - Red/White  
1151-83



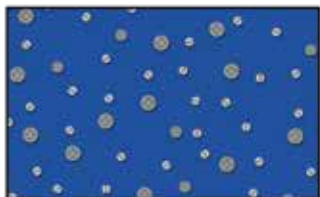
Tossed Construction Signs  
White/Yellow - 1152-48



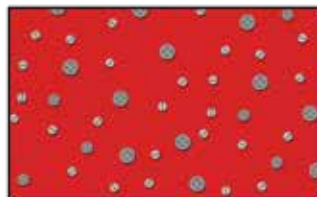
Tossed Construction Signs  
Royal - 1152-77



Construction Dots - Yellow  
1153-44



Construction Dots - Royal  
1153-77



Construction Dots - Red  
1153-88



Buildings - White/Multi  
1154-87



Large Construction Stripe  
Blue/Multi - 1155-70



Mini Construction Vehicles  
Teal - 1156-16



Mini Construction Vehicles  
White/Multi - 1156-87



Tools - Yellow  
1157-44



Tools - Red  
1157-88



Construction Blocks - Blue/Multi  
1159P-78

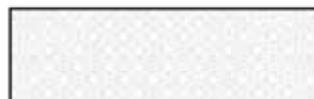


Construction Truck Scenic  
Royal - 1158-77



Construction Truck Scenic  
White/Multi - 1158-87

Select Fabrics from Modern Melody Basics



Pigment White  
1063-01W



Black  
1063-99

### Materials

1 panel	36" Construction Panel - Blue (A)	1150P-77
5/8 yard	Construction Dots - Yellow (B)	1153-44
1/4 yard	Mini Construction Vehicles - Teal (C)	1156-16
1/3 yard	Tools - Red (D)	1157-88
1/4 yard	Bricks - Red/White (E)	1151-83
3/4 yard	Construction Dots - Red (F)	1153-88*
1/3 yard	Modern Melody Basics - Pigment White (G)	1063-01W
7/8 yard	Tossed Construction Signs - Royal (H)	1152-77
3 1/2 yards	Construction Truck Scenic - Royal (Backing)	1158-77

\*Includes binding

### Cutting Instructions

*Please note: all strips are cut across the width of fabric (WOF) from selvage to selvage unless otherwise noted.*

#### From the 36" Construction Panel - Blue (A), fussy cut:

- (1) 34 1/2" x 42 1/2" panel.

#### From the Construction Dots - Yellow (B), cut:

- (3) 1 1/2" x WOF strips. Sew the strips together end to end with diagonal seams and cut (2) 1 1/2" x 52 1/2" strips.
- (3) 1 1/2" x WOF strips. Sew the strips together end to end with diagonal seams and cut (2) 1 1/2" x 46 1/2" strips.
- (2) 2" x 42 1/2" WOF strips, piece as needed.
- (2) 2" x 37 1/2" WOF strips.

#### From the Mini Construction Vehicles - Teal (C), cut:

- (1) 4 1/2" x WOF strip. Sub-cut strip into (4) 4 1/2" squares.

#### From the Tools - Red (D), cut:

- (1) 2 1/2" x WOF strip. Sub-cut strip into (4) 2 1/4" x 2 1/2" strips and (2) 2" x 2 1/4" strips.
- (3) 2 1/4" x WOF strips. Sub-cut strips into (20) 2 1/4" x 4 1/4" strips.

#### From the Bricks - Red/White (E), cut:

- (3) 2 1/4" x WOF strips. Sub-cut strips into (26) 2 1/4" x 4 1/4" strips.

#### From the Construction Dots - Red (F), cut:

- (3) 2 1/4" x WOF strips. Sub-cut strips into (26) 2 1/4" x 4 1/4" strips.
- (1) 2" x WOF strip. Sub-cut strip into (2) 2" x 2 1/4" strips.
- (6) 2 1/2" x WOF strips for the binding.

#### From the Modern Melody Basics - Pigment White (G), cut:

- (5) 1" x WOF strips. Sub-cut strips into (72) 1" x 2 1/4" strips.
- (3) 1" x WOF strips. Sew the strips together end to end with diagonal seams and cut (2) 1" x 44 1/2" strips.
- (2) 1" x 36 1/2" WOF strips.

#### From the Tossed Construction Signs - Royal (H), cut:

- (6) 4 1/2" x WOF strips. Sew the strips together end to end with diagonal seams and cut (4) 4 1/2" x 54 1/2" strips.

#### From the Construction Truck Scenic - Royal (Backing), cut:

- (2) 62" x WOF strips for the backing. Sew the strips together and trim to make the 62" x 70" back.

### Sewing Instructions

1. Sew (1) 2" x 42 1/2" Fabric B strip to each side of the 34 1/2" x 42 1/2" Fabric A panel. Sew (1) 2" x 37 1/2" Fabric B strip to the top and to the bottom of the Fabric A panel. Trim the block to measure 36 1/2" x 44 1/2" to make the Center Block (Fig. 1).

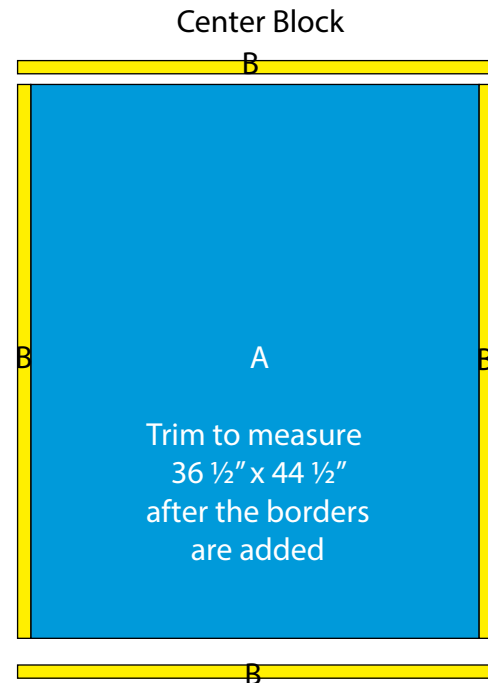


Fig. 1

2. Sew (1) 2 1/4" x 2 1/2" Fabric D strip, (8) 1" x 2 1/4" Fabric G strips, (3) 2 1/4" x 4 1/4" Fabric F strips, (3) 2 1/4" x 4 1/4" Fabric E strips and (2) 2 1/4" x 4 1/4" Fabric D strips together end to end to make (1) DE strip. Repeat to make a second DE strip.

3. Sew (3) 2 1/4" x 4 1/4" Fabric E strips, (8) 1" x 2 1/4" Fabric G strips, (3) 2 1/4" x 4 1/4" Fabric F strips, (2) 2 1/4" x 4 1/4" Fabric D strips and (1) 2 1/4" x 2 1/2" Fabric D strip together end to end to make (1) ED strip. Repeat to make a second ED strip.

4. Sew (1) DE strip to the top of (1) 1" x 36 1/2" Fabric G strip lengthwise. Sew (1) ED strip to the bottom of the Fabric G strip to make (1) Top/Bottom Border (Fig. 2). Repeat to make a second Top/Bottom Border.

5. Sew (1) 2" x 2 1/4" Fabric F strip, (10) 1" x 2 1/4" Fabric G strips, (4) 2 1/4" x 4 1/4" Fabric E strips, (3) 2 1/4" x 4 1/4" Fabric D strips, (3) 2 1/4" x 4 1/4" Fabric F strips together end to end to make (1) FE strip. Repeat to make a second FE strip.

6. Sew (4) 2 1/4" x 4 1/4" Fabric F strips, (10) 1" x 2 1/4" Fabric G strips, (3) 2 1/4" x 4 1/4" Fabric D strips, (3) 2 1/4" x 4 1/4" Fabric E strips, (1) 2" x 2 1/4" Fabric D strip together end to end to make (1) FD strip. Repeat to make a second FD strip.

7. Sew (1) FE strip to the top of (1) 1" x 44 1/2" Fabric G strip lengthwise. Sew (1) FD strip to the bottom of the Fabric G strip to make (1) Side Border (Fig. 3). Repeat to make a second Side B order.

### Quilt Top Assembly

*(Refer to the Quilt Layout while assembling.)*

8. Sew (1) Side Border to each side of the Center Block. Pay attention to the orientation of the borders.

9. Sew (1) 4 1/2" Fabric C square to each end of (1) Top/Bottom Border. Repeat to make a second strip. Sew the strips to the top and to the bottom of the Center Block.

10. Sew (1) 1 1/2" x 52 1/2" Fabric B strip to each side of the Center Block. Sew (1) 1 1/2" x 46 1/2" Fabric B strip to the top and to the bottom of the Center Block.

11. Sew (1) 4 1/2" x 54 1/2" Fabric H strip to each side of the Center Block. Sew (1) 4 1/2" x 54 1/2" Fabric H strip to the top and to the bottom of the Center Block.

12. Layer and quilt as desired.

13. Sew the (6) 2 1/2" x WOF Fabric F strips together, end to end with 45-degree seams, to make the binding. Fold this long strip in half lengthwise with wrong sides together and press.

14. Bind as desired.

Top/Bottom Borders  
make 2

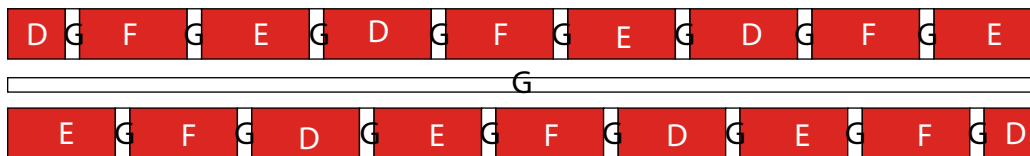


Fig. 2

Side Borders  
make 2

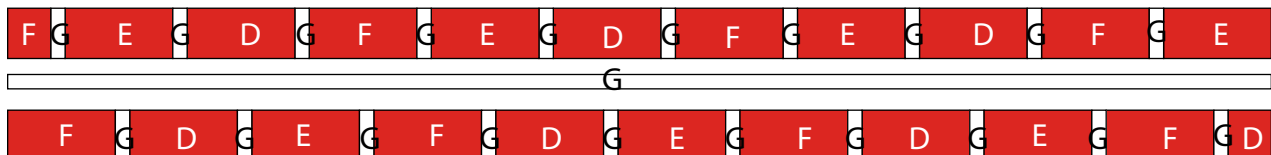
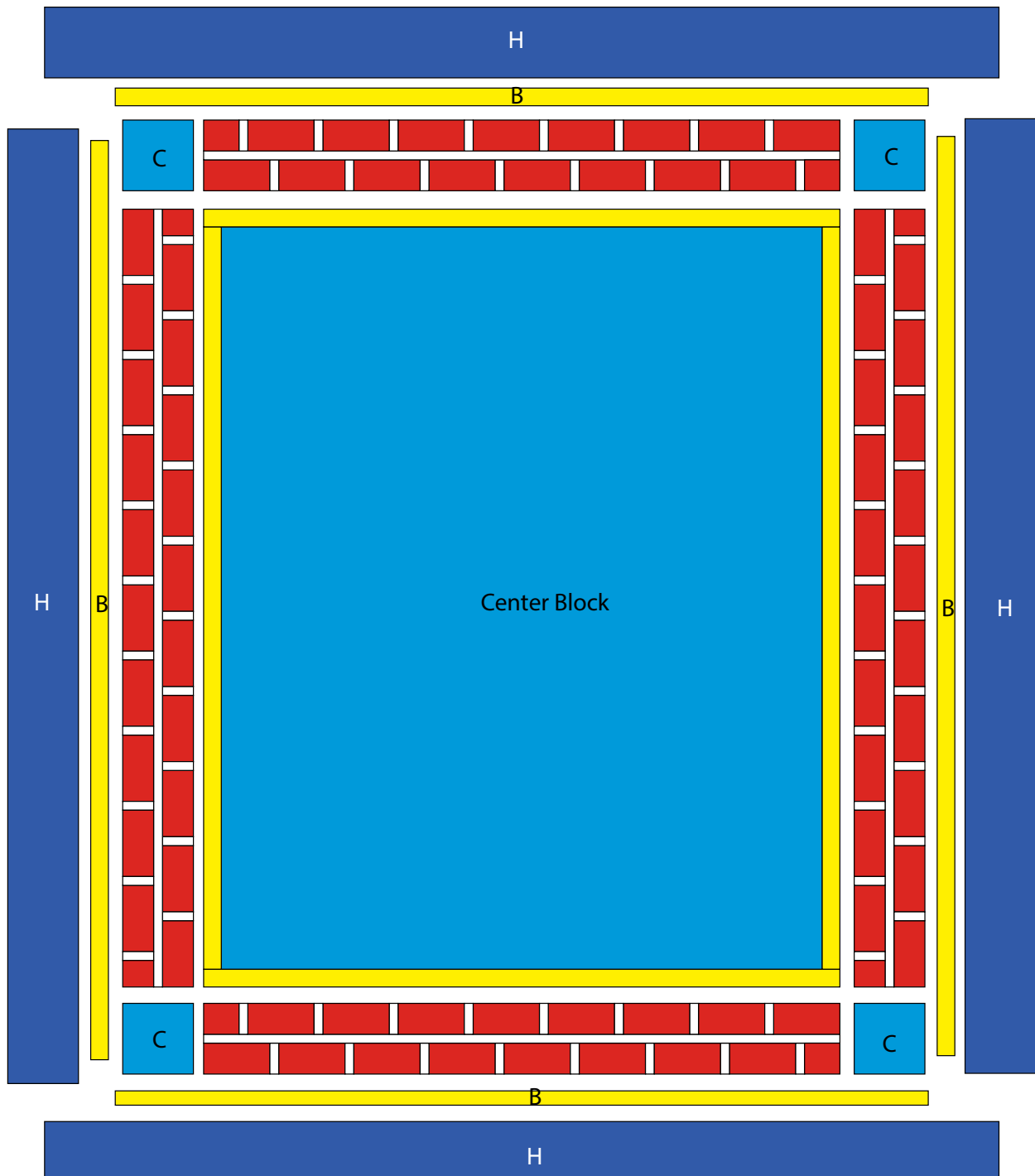


Fig. 3



Quilt Layout

*Every effort has been made to ensure that all projects are error free. All the information is presented in good faith, however no warranty can be given nor results guaranteed as we have no control over the execution of instructions. Therefore, we assume no responsibility for the use of this information or damages that may occur as a result. When errors are brought to our attention, we make every effort to correct and post a revision as soon as possible. Please make sure to check [www.henryglassfabrics.com](http://www.henryglassfabrics.com) for pattern updates prior to starting the project. We also recommend that you test the project prior to cutting for kits. Finally, all free projects are intended to remain free to you and are not for resale.*