


Note to Self



Quilt 2

A Free Project Sheet From

 Henry Glass & Co., Inc.



facebook

Finished Quilt Size: 66" x 66"
49 West 37th Street, New York, NY 10018
tel: 212-686-5194 fax: 212-532-3525
Toll Free: 800-294-9495
www.henryglassfabrics.com

NOTE TO SELF

Quilt 2

Finished Quilt Size: 66" x 66"

Fabrics in the Collection



Word Stripe - Red
8462-88



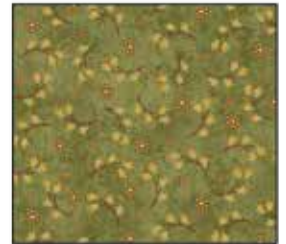
Word Stripe - Blue
8462-77



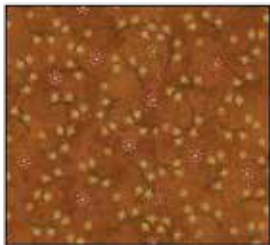
Word Stripe - Cream
8462-44



Flower Sprig - Red
8461-88



Flower Sprig - Green
8461-66



Flower Sprig - Pumpkin
8461-35



Daisy Dot - Red
8460-88



Daisy Dot - Blue
8460-77



Daisy Dot - Gold
8460-33



Vine Stripe - Green
8459-66



Vine Stripe - Brown
8459-38



Vine Stripe - Pumpkin
8459-35



Small Check - Red
8458-88



Small Check - Cream
8458-44



Small Check - Gold
8458-33



Fruits of the Spirit - Red
8457-88



Fruits of the Spirit - Brown
8457-38



Fruits of the Spirit - Gold
8457-33



Hexagon Words - Red
8456-88



Hexagon Words - Navy
8456-77



Hexagon Words - Brown
8456-38

Materials

1/3 yard	Hexagon Words - Brown (A)	8456-38
1/3 yard	Fruits of the Spirit - Red (B)	8457-88
1/3 yard	Fruits of the Spirit - Brown (C)	8457-38
2/3 yard	Flower Sprig - Red (D)	8461-88
1/3 yard	Daisy Dot - Gold (E)	8460-33
1/3 yard	Small Check - Gold (F)	8458-33
2 yards	Small Check - Cream (G)	8458-44
1 1/2 yards	Word Stripe - Cream (H)	8462-44
1/4 yard	Fruits of the Spirit - Gold (I)	8457-33
2/3 yard	Vine Stripe - Brown (J)	8459-38*
3/8 yard	Small Check - Red (K)	8458-88
1/2 yard	Vine Stripe - Green (L)	8459-66
3/8 yard	Daisy Dot - Red (M)	8460-88
1/3 yard	Hexagon Words - Navy (N)	8456-77
1/3 yard	Flower Sprig - Green (O)	8461-66
1/3 yard	Daisy Dot - Blue (P)	8460-77
4 1/4 yards	Hexagon Words - Red (Backing)	8456-88

*Includes binding

Quilt Cutting Instructions

Please note: all strips are cut across the width of fabric (WOF) from selvage to selvage edge unless otherwise noted.

From the Hexagon Words - Brown (A), cut:

- See instructions to cut (4) large hearts.

From the Fruits of the Spirit - Red (B), cut:

- See instructions to cut (4) large hearts.

From the Fruits of the Spirit - Brown (C), cut:

- See instructions to cut (4) large hearts.

From the Flower Sprig - Red (D), cut:

- (3) 3 1/2" x WOF strips. Sub-cut strips into (26) 3 1/2" squares.
- See instructions to cut (4) large hearts.

From the Daisy Dot - Gold (E), cut:

- See instructions to cut (8) small hearts.

From the Small Check - Gold (F), cut:

- See instructions to cut (8) small hearts.

From the Small Check - Cream (G), cut:

- (4) 10 1/2" x WOF strips. Sub-cut strips into (16) 10 1/2" squares.
- (4) 6 1/2" x WOF strips. Sub-cut strips into (40) 3 1/2" x 6 1/2" strips.

From the Word Stripe - Cream (H), cut:

- (2) 5 1/2" x 50 1/2" strips from the length of fabric (LOF).
- (2) 5 1/2" x 50 1/2" WOF strips from the remaining fabric, piece as needed.

From the Fruits of the Spirit - Gold (I), cut:

- (1) 5 1/2" x WOF strip. Sub-cut strip into (4) 5 1/2" squares.

From the Vine Stripe - Brown (J), cut:

- (7) 2 1/2" x WOF strips for the binding.

From the Small Check - Red (K), cut:

- (3) 3 1/2" x WOF strips. Sub-cut strips into (28) 3 1/2" squares.

From the Vine Stripe - Green (L), cut:

- (1) 3 1/2" x WOF strip. Sub-cut strip into (4) 3 1/2" squares.
- (4) 2 1/2" x WOF strips. Sub-cut strips into (57) 2 1/2" squares.

From the Daisy Dot - Red (M), cut:

- (3) 3 1/2" x WOF strips. Sub-cut strips into (26) 3 1/2" squares.

From the Hexagon Words - Navy (N), cut:

- (4) 2 1/2" x WOF strips. Sub-cut strips into (57) 2 1/2" squares.

From the Flower Sprig - Green (O), cut:

- (4) 2 1/2" x WOF strips. Sub-cut strips into (57) 2 1/2" squares.

From the Daisy Dot - Blue (P), cut:

- (4) 2 1/2" x WOF strips. Sub-cut strips into (57) 2 1/2" squares.

From the Hexagon Words - Red (Backing), cut:

- (2) 74" x WOF strips for the backing. Sew the strips together and trim to make the 74" x 74" back.

Sewing Instructions

- Place (1) 3 1/2" Fabric K square on the left side of (1) 3 1/2" x 6 1/2" Fabric G strip, right sides together (Fig. 1). Sew across the diagonal of the square from the upper right corner to the lower left corner (Fig. 1). Flip open the triangle formed and press (Fig. 2). Trim away the excess fabric from behind the triangle, leaving a 1/4" seam allowance.

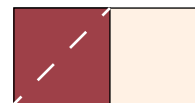


Fig. 1

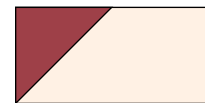


Fig. 2

- Place another 3 1/2" Fabric K square on the right side of the 3 1/2" x 6 1/2" Fabric G strip, right sides together (Fig. 3).
- Sew across the diagonal of the square from the upper left corner to the lower right corner (Fig. 3). Flip open the triangle formed and press (Fig. 4). Trim away the excess fabric from behind the triangle, leaving a 1/4" seam allowance to make (1) KGK unit.

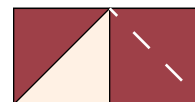


Fig. 3

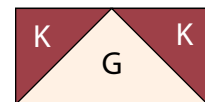


Fig. 4

- Repeat Steps 1-2 to make (14) KGK units.

4. Repeat Steps 1-2 using (13) 3 ½" x 6 ½" Fabric G strips and (26) 3 ½" Fabric D squares to make (13) DGD units (Fig. 5).

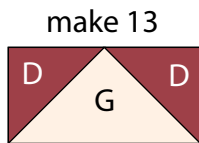


Fig. 5

5. Repeat Steps 1-2 using (13) 3 ½" x 6 ½" Fabric G strips and (26) 3 ½" Fabric M squares to make (13) MGM units (Fig. 6).

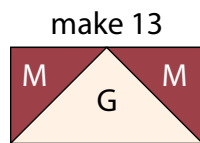


Fig. 6

6. Sew (3) assorted 2 ½" blue squares and (2) assorted 2 ½" green squares together, alternating them, to make (1) sashing strip. Repeat to make (20) sashing strips total.

7. Sew (13) assorted 2 ½" green squares and (12) assorted 2 ½" blue squares together, alternating them, to make (1) sashing row. Repeat to make (5) sashing rows total.

Note: You will not use (3) of the squares.

8. Following the manufacturer's instructions, trace the listed number of each template onto the paper side of the fusible web. Roughly cut out each template about ⅛" outside the drawn lines.

9. Press each template onto the wrong side of the fabrics as listed on the templates. Cut out each template on the drawn lines.

10. Refer to the quilt photo to arrange and press (1) small Fabric E heart and (1) large Fabric A heart together onto (1) 10 ½" Fabric G square to make (1) A heart block. Repeat to make (4) A heart blocks.

11. Repeat Step 10 using the large Fabric B hearts and small Fabric F hearts; the large Fabric D hearts and small Fabric F hearts; the large Fabric C hearts and small Fabric E hearts and the 10 ½" Fabric G squares to make (4) B hearts, (4) D hearts and (4) C hearts.

12. Finish the raw edges of each shape with a decorative stitch such as a buttonhole or satin stitch to complete the (16) heart blocks.

Quilt Top Assembly

(Refer to the Quilt Layout while assembling.)

13. Sew (5) sashing strips, (2) A hearts and (2) B hearts together to make Row One. Repeat to make Row Three.

14. Sew (5) sashing strips, (2) D hearts and (2) C hearts together to make Row Two. Repeat to make Row Four.

15. Sew (5) sashing rows and (4) heart rows, in numerical order, alternating them to make the quilt top.

16. Sew (1) 5 ½" x 50 ½" Fabric H strip to each side of the quilt top. Sew (1) 5 ½" Fabric I square to each end of (1) 5 ½" x 50 ½" Fabric H strip. Repeat to make a second strip. Sew the strips to the top and to the bottom of the quilt top.

17. Sew (4) KGK units, (3) MGM units and (3) DGD units together end to end to make (1) strip. Sew this strip to the left side of the quilt top.

18. Sew (4) DGD units, (3) MGM units and (3) KGK units together end to end to make (1) strip. Sew this strip to the right side of the quilt top.

19. Sew (4) KGK units, (3) MGM units and (3) DGD units together end to end. Sew (1) 3 ½" Fabric L square to each end to make (1) strip. Sew this strip to the top of the quilt top.

20. Sew (4) MGM units, (3) KGK units and (3) DGD units together end to end. Sew (1) 3 ½" Fabric L square to each end to make (1) strip. Sew this strip to the bottom of the quilt top.

21. Layer and quilt as desired.

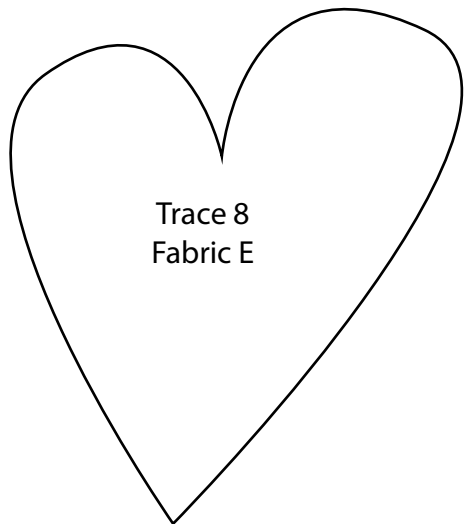
22. Sew the (7) 2 ½" x WOF Fabric J strips together, end to end with 45-degree seams, to make the binding. Fold this long strip in half lengthwise with wrong sides together and press.

23. Bind as desired.

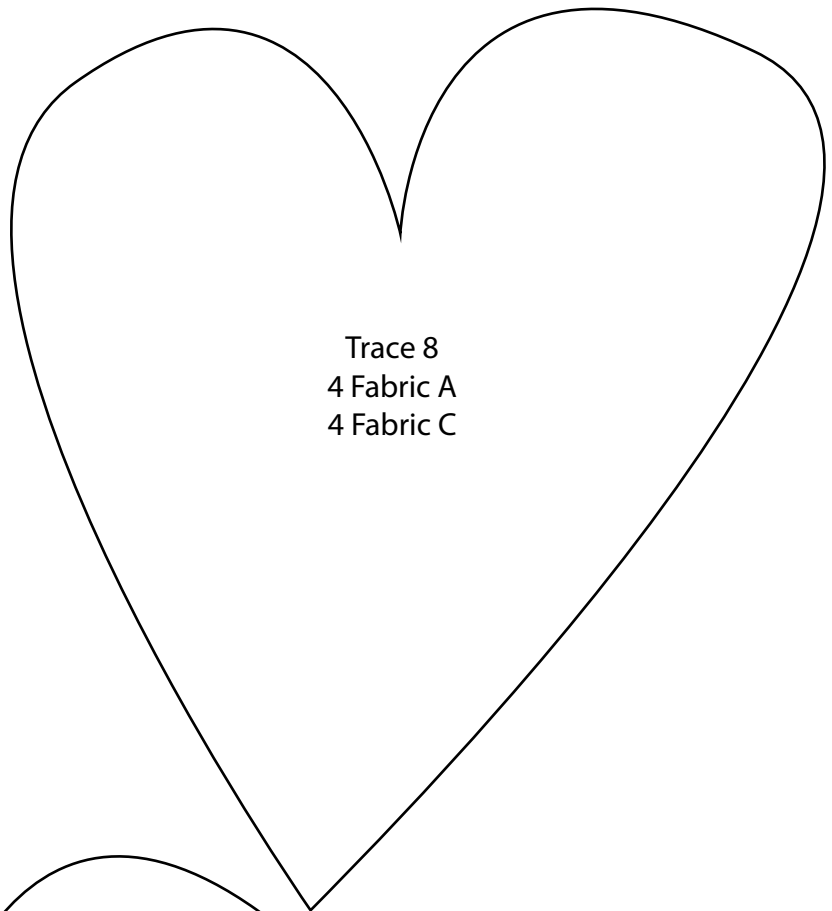
NOTE TO SELF

Quilt 2

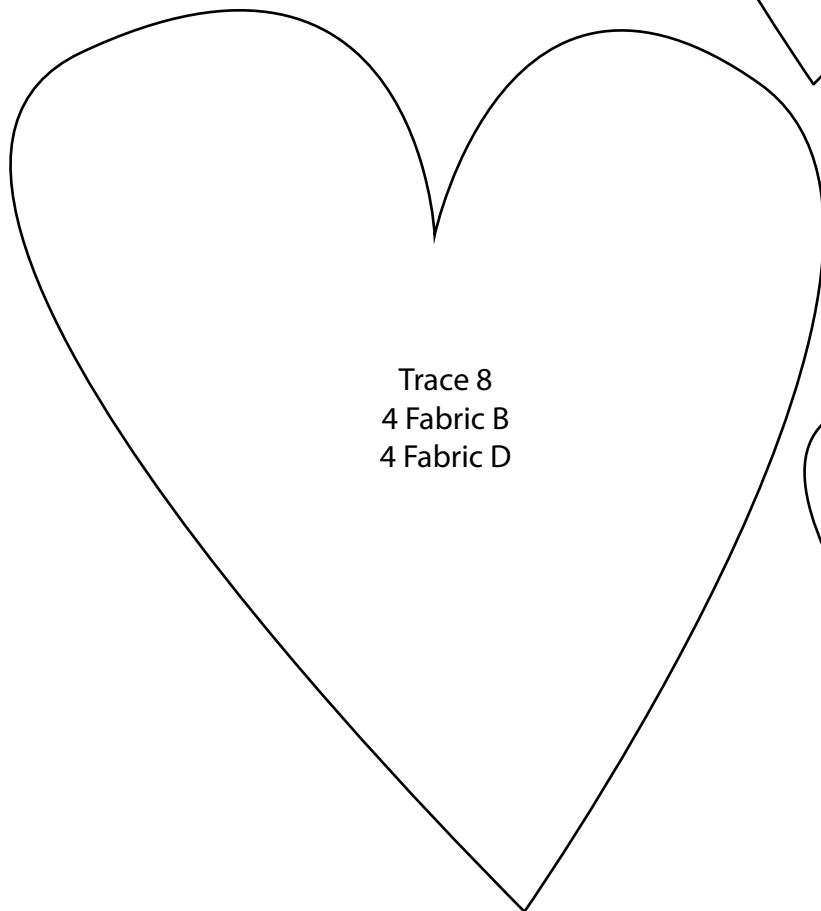
Templates
ENLARGE 200%



Trace 8
Fabric E



Trace 8
4 Fabric A
4 Fabric C



Trace 8
4 Fabric B
4 Fabric D



Trace 8
Fabric F