

# Panda-monium



A Free Project Sheet  
**NOT FOR RESALE**



2 ply  
flannel

Quilt Design by Heidi Pridemore

Quilt 1

Skill Level: Beginner

 Henry Glass & Co., Inc.



facebook

Finished Quilt Size: 50" x 66"  
49 West 37th Street, New York, NY 10018  
tel: 212-686-5194 fax: 212-532-3525  
Toll Free: 800-294-9495  
www.henryglassfabrics.com

# PANDA-MONIUM Quilt 1

Finished Quilt Size: 50" x 66"

## Fabrics in the Collection



Panda Boxes - Aqua  
F1161-16



Mini Panda - Aqua  
F1162-16



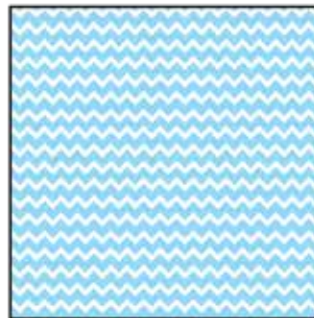
Mini Panda - Yellow  
F1162-44



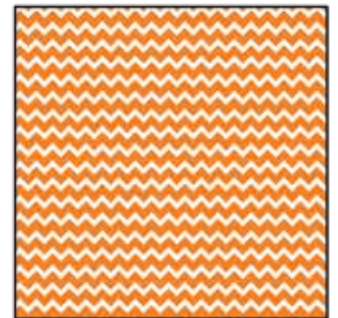
Panda Bears in Circles  
White/Multi - F1163-1



Panda Patch - Multi  
F1164-10



Zig Zag - Aqua  
F1165-16



Zig Zag - Orange  
F1165-30



Tossed Panda Bears - Aqua  
F1166-16



Tossed Panda Bears - Yellow  
F1166-44



Large Panda Stripe - Multi  
F1167-10



Dots - Aqua  
F1168-16



Dots - Yellow  
F1168-44



Dots - Green  
F1168-66

Select Fabric from  
Fluffy Solid Basics



Fluffy Solid Basics - White  
Fluffy - White

### Materials

1 panel	Panda Boxes - Aqua (A)	F1161-16
¾ yard	Dots - Yellow (B)	F1168-44
½ yard	Zig Zag - Aqua (C)	F1165-16
¼ yard	Dots - Green (D)	F1168-66
½ yard	Tossed Panda Bears - Yellow (E)	F1166-44
½ yard	Zig Zag - Orange (F)	F1165-30
1 ⅛ yards	Dots - Aqua (G)	F1168-16*
1 yard	Fluffy Solid Basics - White (H)	Fluffy-White
3 ⅓ yards	Mini Pandas - Aqua (Backing)	F1162-16

\*Includes binding

### Cutting Instructions

Please note: all strips are cut across the width of fabric (WOF) from selvage to selvage unless otherwise noted.

#### From the Panda Boxes - Aqua (A), fussy cut:

- (6) 7 ½" blocks.

#### From the Dots - Yellow (B), cut:

- (3) 2 ½" x WOF strips. Sub-cut strips into (12) 2 ½" x 7 ½" strips.
- (4) 2 ½" x WOF strips. Sub-cut strips into (12) 2 ½" x 11 ½" strips.
- (2) 2 ½" x WOF strips. Sub-cut strips into (24) 2 ½" squares.

#### From the Zig Zag - Aqua (C), cut:

- (6) 2 ½" x WOF strips. Sub-cut strips into (24) 2 ½" x 10 ½" strips.

#### From the Dots - Green (D), cut:

- (2) 2 ½" x WOF strips. Sub-cut strips into (24) 2 ½" squares.

#### From the Tossed Panda Bears - Yellow (E), cut:

- (2) 7 ½" x WOF strips. Sub-cut strips into (6) 7 ½" squares.

#### From the Zig Zag - Orange (F), cut:

- (3) 2" x WOF strips. Sub-cut strips into (12) 2" x 10 ½" strips.
- (3) 2" x WOF strip. Sub-cut strip into (12) 2" x 7 ½" strips.

#### From the Dots - Aqua (G), cut:

- (6) 2 ½" x WOF strips. Sub-cut strips into (24) 2 ½" x 10 ½" strips.
- (2) 2 ½" x WOF strips. Sub-cut strips into (20) 2 ½" squares.
- (6) 2 ½" x WOF strips for the binding.

#### From the Fluffy Solid Basics - White (H), cut:

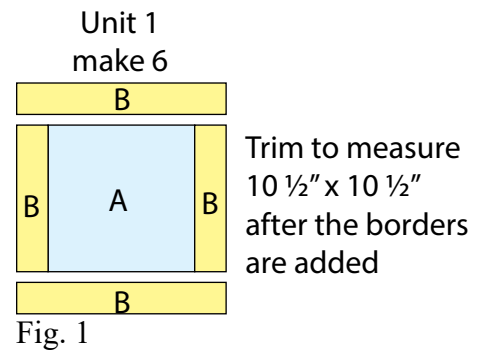
- (2) 14 ½" x WOF strips. Sub-cut strips into (31) 2 ½" x 14 ½" strips.

#### From the Mini Pandas - Aqua (Backing), cut:

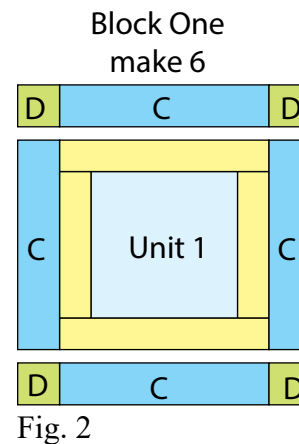
- (2) 58" x WOF strips for the backing. Sew the strips together and trim to make the 58" x 74" back.

### Sewing Instructions

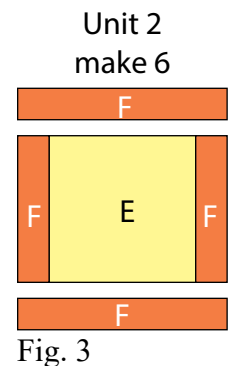
1. Sew (1) 2 ½" x 7 ½" Fabric B strip to each side of (1) 7 ½" Fabric A block. Sew (1) 2 ½" x 11 ½" Fabric B strip to the top and to the bottom of the Fabric A block. Trim the block to measure 10 ½" square to make (1) Unit 1 square (Fig. 1). Repeat to make (6) Unit 1 squares total.



2. Sew (1) 2 ½" x 10 ½" Fabric C strip to each side of (1) Unit 1 square. Sew (1) 2 ½" Fabric D square to each end of (1) 2 ½" x 10 ½" Fabric C strip. Repeat to make a second strip. Sew the strips to the top and to the bottom of the Unit 1 square to make (1) Block One square (Fig. 2). Repeat to make (6) Block One squares total.



3. Sew (1) 2" x 7 ½" Fabric F strip to each side of (1) 7 ½" Fabric E square. Sew (1) 2" x 10 ½" Fabric F strip to the top and to the bottom of the Fabric E square to make (1) Unit 2 square (Fig. 3). Repeat to make (6) Unit 2 squares total.



4. Sew (1)  $2\frac{1}{2}$ " x  $10\frac{1}{2}$ " Fabric G strip to each side of (1) Unit 2 square. Sew (1)  $2\frac{1}{2}$ " Fabric B square to each end of (1)  $2\frac{1}{2}$ " x  $10\frac{1}{2}$ " Fabric G strip. Repeat to make a second strip. Sew the strips to the top and to the bottom of the Unit 2 square to make (1) Block Two square (Fig. 4). Repeat to make (6) Block Two squares total.

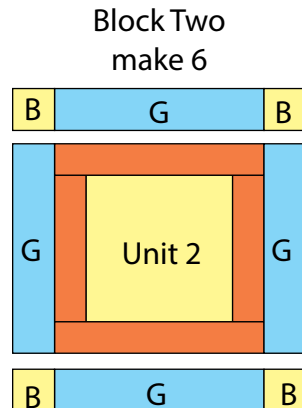


Fig. 4

5. Sew (4)  $2\frac{1}{2}$ " Fabric G squares and (3)  $2\frac{1}{2}$ " x  $14\frac{1}{2}$ " Fabric H strips together end to end and alternating them, to make (1) Sashing Row (Fig. 5). Repeat to make (5) Sashing Rows total.

Sashing Row  
make 5

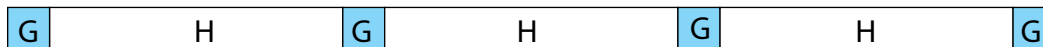


Fig. 5

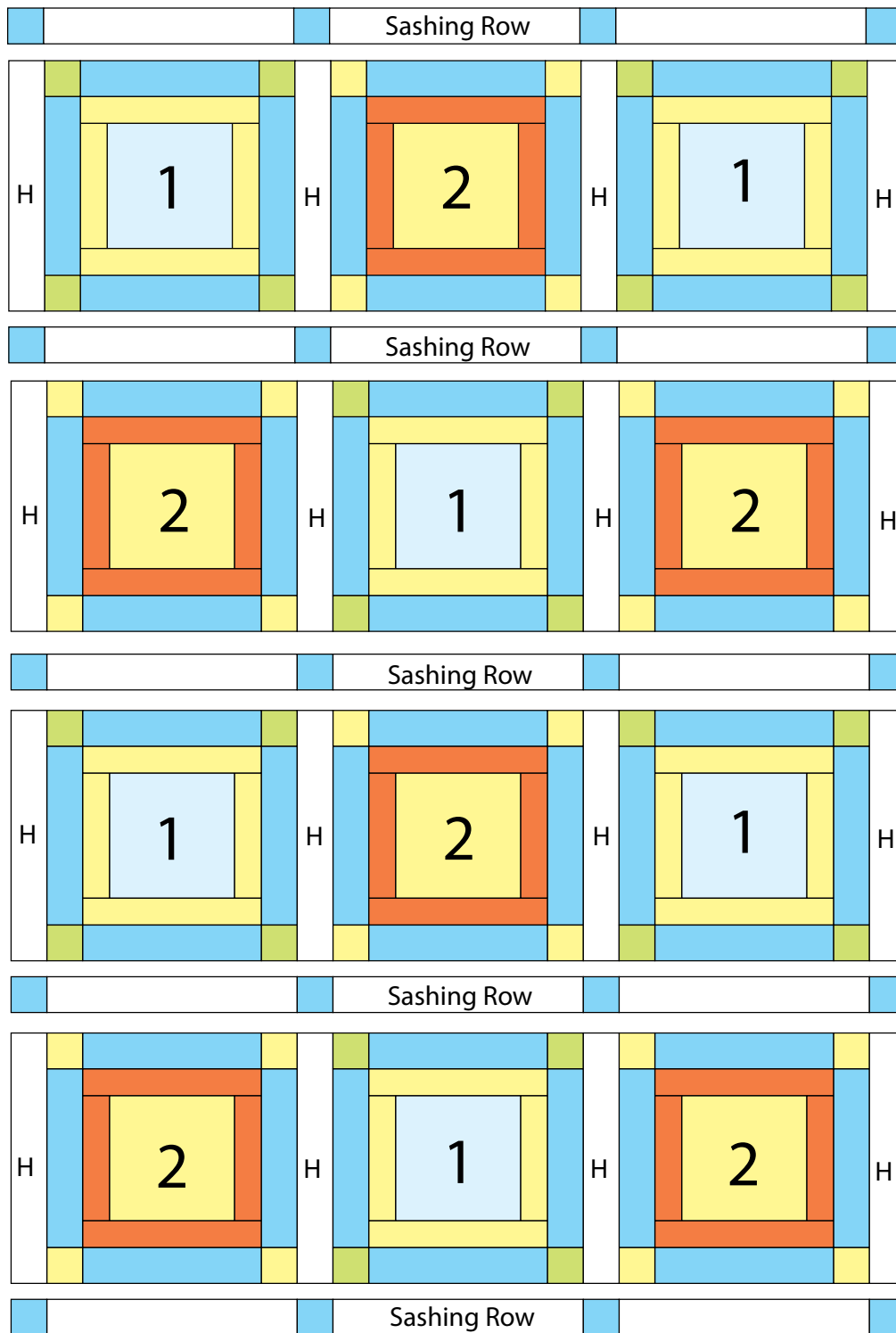
### Quilt Top Assembly

*(Refer to the Quilt Layout while assembling.)*

6. Sew (4)  $2\frac{1}{2}$ " x  $14\frac{1}{2}$ " Fabric H strips, (2) Block Ones and (1) Block Two together to make Row One. Repeat to make Row Three.
7. Sew (4)  $2\frac{1}{2}$ " x  $14\frac{1}{2}$ " Fabric H strips, (2) Block Twos and (1) Block One together to make Row Two. Repeat to make Row Four.
8. Sew the (5) sashing rows and (4) block rows, in numerical order, together, alternating them, to make the quilt top.
9. Layer and quilt as desired.
10. Sew the (6)  $2\frac{1}{2}$ " x WOF Fabric G strips together, end to end with 45-degree seams, to make the binding. Fold this long strip in half lengthwise with wrong sides together and press.
11. Bind as desired.

# PANDA-MONIUM

Quilt 1



Quilt Layout

Every effort has been made to ensure that all projects are error free. All the information is presented in good faith, however no warranty can be given nor results guaranteed as we have no control over the execution of instructions. Therefore, we assume no responsibility for the use of this information or damages that may occur as a result. When errors are brought to our attention, we make every effort to correct and post a revision as soon as possible. Please make sure to check [www.henryglassfabrics.com](http://www.henryglassfabrics.com) for pattern updates prior to starting the project. We also recommend that you test the project prior to cutting for kits. Finally, all free projects are intended to remain free to you and are not for resale.