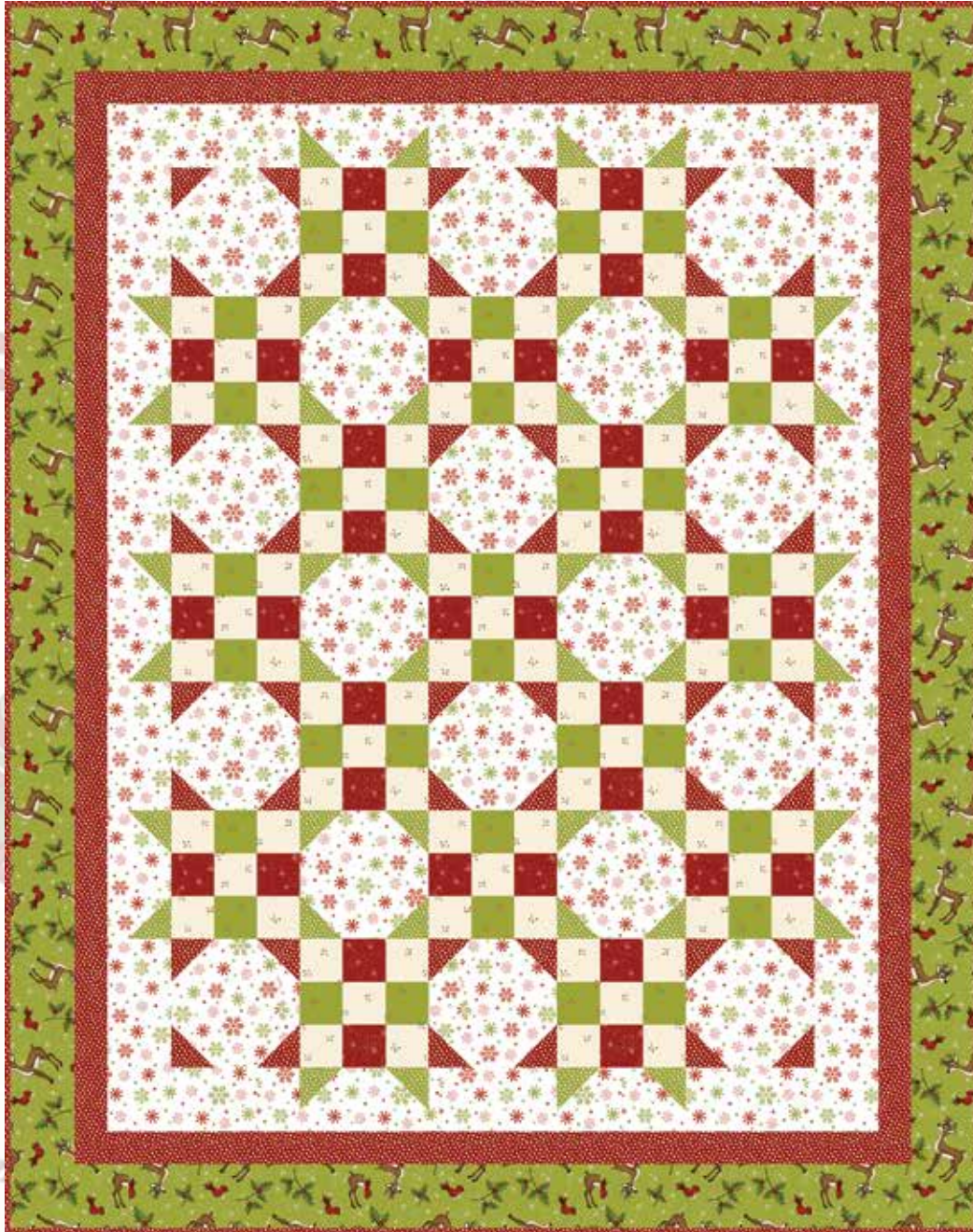


Reindeer Magic



A Free Project Sheet
NOT FOR RESALE

By Mary Jane Carey



Quilt Design by Mary Jane Carey

Quilt 1

Skill Level: Advanced Beginner

A Free Project Sheet From



Finished Quilt Size: 45" x 57"
49 West 37th Street, New York, NY 10018
tel: 212-686-5194 fax: 212-532-3525
Toll Free: 800-294-9495
www.henryglassfabrics.com

REINDEER MAGIC

Finished Quilt Size: 45" x 57"

Quilt 1

Fabrics in the Collection



Rudy's Panel - Cream
8778P-44



Character Toss - Cream
8779-44



Character Toss - Green
8779-66



Character Toss - Red
8779-88



Candy Cane Bouquets - Cream
8780-44



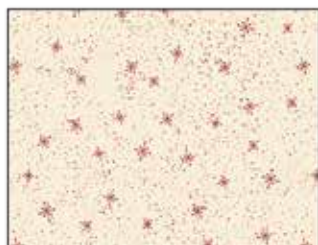
Candy Cane Bouquets - Red
8780-88



Snowflake - Cream/Red
8781-48



Snowflake - Red
8781-88



Mini Snowflakes - Cream/Red
8782-48



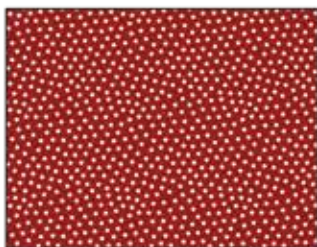
Mini Snowflakes - Red
8782-88



Dots - Cream
8783-44



Dots - Green
8783-66



Dots - Red
8783-88



Grass Mini - Cream
8784-44



Grass Mini - Green
8784-66



Grass Mini - Red
8784-88

Materials

1 1/8 yards	Snowflake - Cream/Red (A)	8781-48
1 yard	Dots - Red (B)	8783-88*
3/8 yard	Dots - Green (C)	8783-66
1/2 yard	Grass Mini - Cream (D)	8784-44
1/4 yard	Mini Snowflakes - Red (E)	8782-88
1/4 yard	Grass Mini - Green (F)	8784-66
3/4 yard	Character Toss - Green (G)	8779-66
3 yards	Character Toss - Red (Backing)	8779-88

*Includes binding

Cutting Instructions

Please note: all strips are cut across the width of fabric (WOF) from selvage to selvage unless otherwise noted.

From the Snowflake - Cream/Red (A), cut:

- (3) 6 1/2" x WOF strips. Sub-cut strips into (18) 6 1/2" squares.
- (4) 3 1/2" x WOF strips. Sub-cut strips into (20) 3 1/2" x 6 1/2" strips.
- (1) 3 1/2" x WOF strip. Sub-cut strip into (4) 3 1/2" x 9 1/2" strips.

From the Dots - Red (B), cut:

- (3) 2 1/2" x WOF strips. Sub-cut strips into (48) 2 1/2" squares.
- (3) 2" x WOF strips. Sew the strips together end to end with diagonal seams and cut (2) 2" x 48 1/2" strips.
- (2) 2" x WOF strips. Sub-cut strips into (2) 2" x 39 1/2" strips.
- (6) 2 1/2" x WOF strips for the binding.

From the Dots - Green (C), cut:

- (3) 2 1/2" x WOF strips. Sub-cut strips into (44) 2 1/2" squares.

From the Grass Mini - Cream (D), cut:

- (6) 2 1/2" x WOF strips. Sub-cut strips into (85) 2 1/2" squares.

From the Mini Snowflakes - Red (E), cut:

- (3) 2 1/2" x WOF strips. Sub-cut strips into (34) 2 1/2" squares.

From the Grass Mini - Green (F), cut:

- (3) 2 1/2" x WOF strips. Sub-cut strips into (34) 2 1/2" squares.

From the Character Toss - Green (G), cut:

- (3) 3 1/2" x WOF strips. Sew the strips together end to end with diagonal seams and cut (2) 3 1/2" x 51 1/2" strips.
- (3) 3 1/2" x WOF strips. Sew the strips together end to end with diagonal seams and cut (2) 3 1/2" x 45 1/2" strips.

From the Character Toss - Red (Backing), cut:

- (2) 53" x WOF strips for the backing. Sew the strips together and trim to make the 53" x 65" back.

Sewing Instructions

1. Place (1) 2 1/2" Fabric B square on the top left corner of (1) 6 1/2" Fabric A square, right sides together (Fig. 1). Sew across the diagonal of the smaller square from the upper right corner to the lower left corner (Fig. 1). Flip open the triangle formed and press (Fig. 2). Trim away the excess fabric from behind the triangle 1/4" away from the sewn seam.

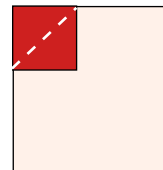


Fig. 1

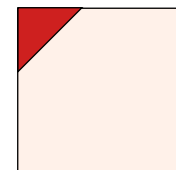


Fig. 2

2. Follow Figure 3 for the seam direction to add a 2 1/2" Fabric B square to each of the remaining corners of the 6 1/2" Fabric A square to make (1) Block One (Fig. 4).

3. Repeat Steps 1-2 to make (12) Block Ones total.

4. Repeat Steps 1-2 using (6) 6 1/2" Fabric A squares and (24) 2 1/2" Fabric C squares to make (6) Block Twos (Fig. 5).

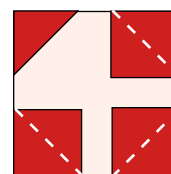


Fig. 3

Block One
make 12

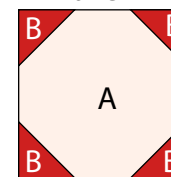


Fig. 4

Block Two
make 6

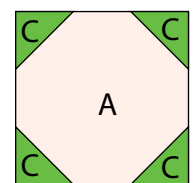


Fig. 5

5. Place (1) 2 1/2" Fabric C square on the lower left corner of (1) 3 1/2" x 6 1/2" Fabric A strip, right sides together. Sew across the diagonal of the square from the upper left corner to the lower right corner. Flip open the triangle formed and press. Trim away the excess fabric from behind the triangle, leaving a 1/4" seam allowance.

6. Place another 2 1/2" Fabric C square on the lower right corner of the 3 1/2" x 6 1/2" Fabric A strip, right sides together. Sew across the diagonal of the square from the upper right corner to the lower left corner. Flip open the triangle formed and press. Trim away the excess fabric from behind the triangle, leaving a 1/4" seam allowance to make (1) Unit 1 strip (Fig. 6).

7. Repeat Steps 5-6 to make (10) Unit 1 strips total.

Unit 1
make 10

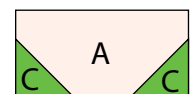


Fig. 6

REINDEER MAGIC

Quilt 1

8. Follow Figure 7 and sew (9) assorted $2\frac{1}{2}$ " squares together to make (1) Block Three. Repeat to make (17) Block Threes total.

Block Three
make 17

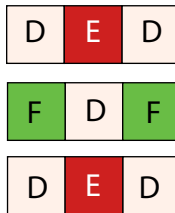


Fig. 7

Quilt Top Assembly

(Refer to the *Quilt Layout while assembling.*)

9. Sew (1) $3\frac{1}{2}$ " x $9\frac{1}{2}$ " Fabric A strip, (1) Unit 1 strip, (1) $3\frac{1}{2}$ " x $6\frac{1}{2}$ " Fabric A strip, (1) Unit 1 strip and (1) $3\frac{1}{2}$ " x $9\frac{1}{2}$ " Fabric A strip together end to end and in that order to make Row One. Repeat to make Row Nine. Pay attention to the orientation of the units.

10. Sew (3) Block Ones and (2) Block Threes together, alternating them. Sew (1) $3\frac{1}{2}$ " x $6\frac{1}{2}$ " Fabric A strip lengthwise to the resulting strip to make Row Two. Repeat to make Rows Four, Six and Eight.

11. Sew (3) Block Threes and (2) Block Twos together, alternating them. Sew (1) Unit 1 to each end of the strip lengthwise to make Row Three. Repeat to make Rows Five and Seven.

12. Sew the (9) rows together, in numerical order, to make the Center Block.

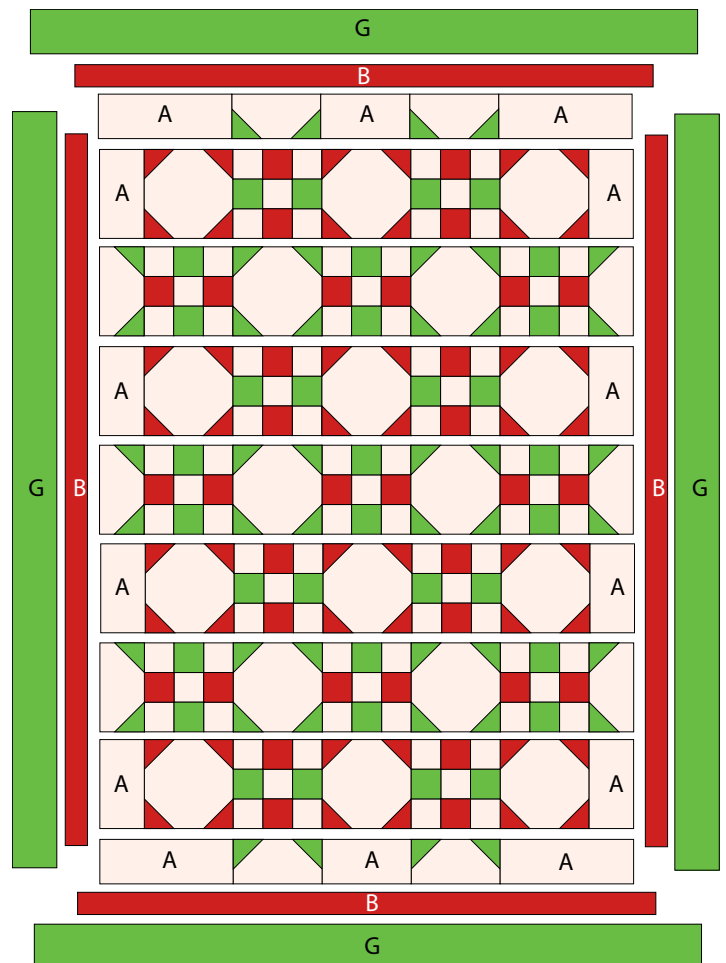
13. Sew (1) 2 " x $48\frac{1}{2}$ " Fabric B strip to each side of the Center Block. Sew (1) 2 " x $39\frac{1}{2}$ " Fabric B strip to the top and to the bottom of the Center Block.

14. Sew (1) $3\frac{1}{2}$ " x $51\frac{1}{2}$ " Fabric G strip to each side of the Center Block. Sew (1) $3\frac{1}{2}$ " x $45\frac{1}{2}$ " Fabric G strip to the top and to the bottom of the Center Block to make the quilt top.

15. Layer and quilt as desired.

16. Sew the (6) $2\frac{1}{2}$ " x WOF Fabric B strips together, end to end with 45-degree seams, to make the binding. Fold this long strip in half lengthwise with wrong sides together and press.

17. Bind as desired.



Quilt Layout

Every effort has been made to ensure that all projects are error free. All the information is presented in good faith, however no warranty can be given nor results guaranteed as we have no control over the execution of instructions. Therefore, we assume no responsibility for the use of this information or damages that may occur as a result. When errors are brought to our attention, we make every effort to correct and post a revision as soon as possible. Please make sure to check www.henryglassfabrics.com for pattern updates prior to starting the project. We also recommend that you test the project prior to cutting for kits. Finally, all free projects are intended to remain free to you and are not for resale.