

# Reindeer Magic



A Free Project Sheet  
**NOT FOR RESALE**

*By Mary Jane Carey*



Quilt Design by Mary Jane Carey

## Quilt 2

Skill Level: Beginner

A Free Project Sheet From



Finished Quilt Size: 39" x 41"  
49 West 37th Street, New York, NY 10018  
tel: 212-686-5194 fax: 212-532-3525  
Toll Free: 800-294-9495  
www.henryglassfabrics.com

# REINDEER MAGIC

Finished Quilt Size: 39" x 41"

Quilt 2

## Fabrics in the Collection



Rudy's Panel - Cream  
8778P-44



Character Toss - Cream  
8779-44



Character Toss - Green  
8779-66



Character Toss - Red  
8779-88



Candy Cane Bouquets - Cream  
8780-44



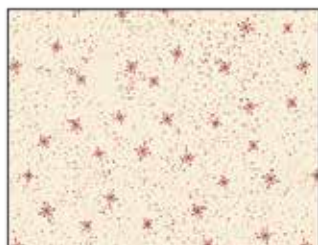
Candy Cane Bouquets - Red  
8780-88



Snowflake - Cream/Red  
8781-48



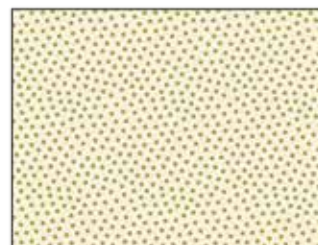
Snowflake - Red  
8781-88



Mini Snowflakes - Cream/Red  
8782-48



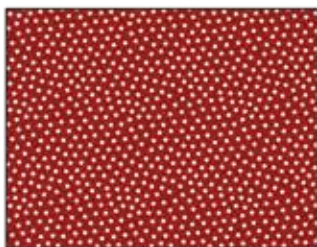
Mini Snowflakes - Red  
8782-88



Dots - Cream  
8783-44



Dots - Green  
8783-66



Dots - Red  
8783-88



Grass Mini - Cream  
8784-44



Grass Mini - Green  
8784-66



Grass Mini - Red  
8784-88

### Materials

1 panel	Rudy's Panel - Cream (A)	8778P-44
¼ yard	Dots - Cream (B)	8783-44
¼ yard	Mini Snowflakes - Cream/Red (C)	8782-48
⅛ yard	Grass Mini - Red (D)	8784-88
⅛ yard	Snowflake - Red (E)	8781-88
⅛ yard	Mini Snowflakes - Red (F)	8782-88
½ yard	Dots - Red (G)	8783-88*
¼ yard	Dots - Green (H)	8783-66
⅓ yard	Snowflake - Cream/Red (I)	8781-48
½ yard	Character Toss - Cream (J)	8779-44
2 ¾ yards	Candy Cane Bouquets - Red (Backing)	8780-88

\*Includes binding

### Cutting Instructions

*Please note: all strips are cut across the width of fabric (WOF) from selvage to selvage edge unless otherwise noted.*

#### **From the Rudy's Panel - Cream (A), fussy cut:**

- (1) 22 ½" x 24 ½" panel.

#### **From the Dots - Cream (B), cut:**

- (2) 2 ½" x WOF strips. Sub-cut strips into (24) 2 ½" squares.

#### **From the Mini Snowflakes - Cream/Red (C), cut:**

- (2) 2 ½" x WOF strips. Sub-cut strips into (24) 2 ½" squares.

#### **From the Grass Mini - Red (D), cut:**

- (1) 2 ½" x WOF strip. Sub-cut strip into (8) 2 ½" squares.

#### **From the Snowflake - Red (E), cut:**

- (1) 2 ½" x WOF strip. Sub-cut strip into (7) 2 ½" squares.

#### **From the Mini Snowflakes - Red (F), cut:**

- (1) 2 ½" x WOF strip. Sub-cut strip into (8) 2 ½" squares.

#### **From the Dots - Red (G), cut:**

- (1) 2 ½" x WOF strip. Sub-cut strip into (7) 2 ½" squares.
- (5) 2 ½" x WOF strips for the binding.

#### **From the Dots - Green (H), cut:**

- (2) 2 ½" x WOF strips. Sub-cut strips into (30) 2 ½" squares.

#### **From the Snowflake - Cream/Red (I), cut:**

- (2) 2" x WOF strips. Sub-cut strips into (2) 2" x 33 ½" strips.
- (2) 2" x WOF strips. Sub-cut strips into (2) 2" x 32 ½" strips.

#### **From the Character Toss - Cream (J), cut:**

- (2) 3 ½" x WOF strips. Sub-cut strips into (2) 3 ½" x 35 ½" strips.
- (2) 3 ½" x WOF strips. Sub-cut strips into (2) 3 ½" x 39 ½" WOF strips.

#### **From the Candy Cane Bouquets - Red (Backing), cut:**

- (2) 47" x WOF strips for the backing. Sew the strips together and trim to make the 47" x 49" back.

### Sewing Instructions

1. Sew (24) assorted 2 1/2" squares together into a 2-block by 12-block strip. Repeat to make a second strip. Sew (1) strip to each side of the 22 1/2" x 24 1/2" Fabric A panel.
2. Sew (30) assorted 2 1/2" squares together into a 2-block by 15-block strip. Repeat to make a second strip. Sew the strips to the top and to the bottom of the 22 1/2" x 24 1/2" Fabric A panel to make the Center Block.

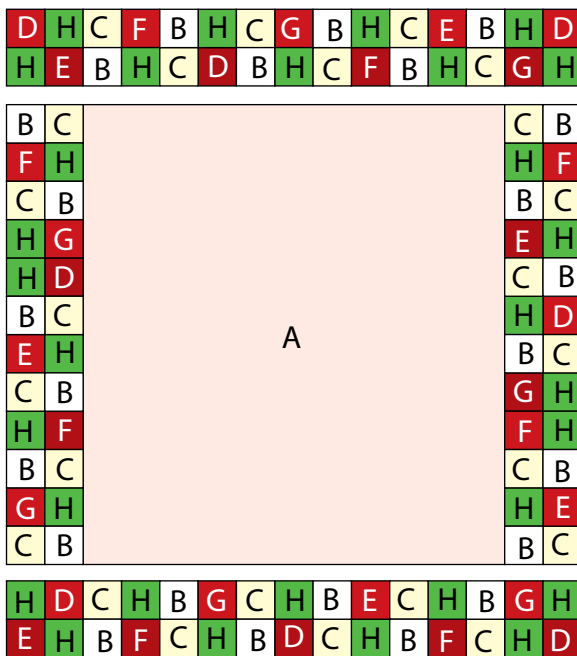
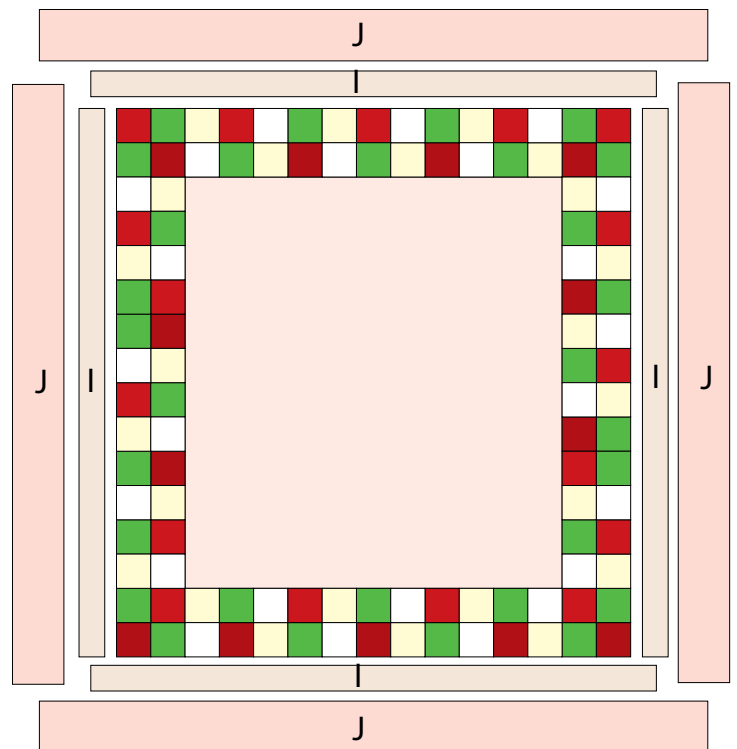


Fig. 1

### Quilt Top Assembly

(Refer to the *Quilt Layout while assembling.*)

3. Sew (1) 2" x 32 1/2" Fabric I strip to each side of the Center Block. Sew (1) 2" x 33 1/2" Fabric I strip to the top and to the bottom of the Center Block.
4. Sew (1) 3 1/2" x 35 1/2" Fabric J strip to each side of the Center Block. Sew (1) 3 1/2" x 39 1/2" Fabric J strip to the top and to the bottom of the Center Block to make the quilt top.
5. Layer and quilt as desired.
6. Sew the (5) 2 1/2" x WOF Fabric G strips together, end to end with 45-degree seams, to make the binding. Fold this long strip in half lengthwise with wrong sides together and press.
7. Bind as desired.



Quilt Layout

Every effort has been made to ensure that all projects are error free. All the information is presented in good faith, however no warranty can be given nor results guaranteed as we have no control over the execution of instructions. Therefore, we assume no responsibility for the use of this information or damages that may occur as a result. When errors are brought to our attention, we make every effort to correct and post a revision as soon as possible. Please make sure to check [www.henryglassfabrics.com](http://www.henryglassfabrics.com) for pattern updates prior to starting the project. We also recommend that you test the project prior to cutting for kits. Finally, all free projects are intended to remain free to you and are not for resale.