

Reindeer Magic



A Free Project Sheet
NOT FOR RESALE

By *Mary Jane Carey*



Quilt Design by Mary Jane Carey

Quilt 3

Skill Level: Beginner

A Free Project Sheet From



Finished Quilt Size: 42" x 28"
49 West 37th Street, New York, NY 10018
tel: 212-686-5194 fax: 212-532-3525
Toll Free: 800-294-9495
www.henryglassfabrics.com

REINDEER MAGIC

Finished Quilt Size: 42" x 28"

Quilt 3

Fabrics in the Collection



Rudy's Panel - Cream
8778P-44



Character Toss - Cream
8779-44



Character Toss - Green
8779-66



Character Toss - Red
8779-88



Candy Cane Bouquets - Cream
8780-44



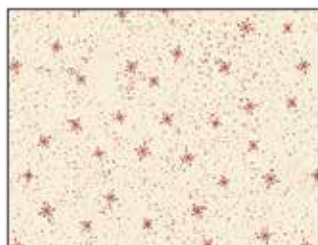
Candy Cane Bouquets - Red
8780-88



Snowflake - Cream/Red
8781-48



Snowflake - Red
8781-88



Mini Snowflakes - Cream/Red
8782-48



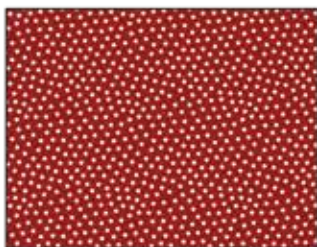
Mini Snowflakes - Red
8782-88



Dots - Cream
8783-44



Dots - Green
8783-66



Dots - Red
8783-88



Grass Mini - Cream
8784-44



Grass Mini - Green
8784-66



Grass Mini - Red
8784-88

REINDEER MAGIC

Quilt 3

Materials

| | | |
|-----------|----------------------------------|----------|
| 1 panel | Rudy's Panel - Cream (A) | 8778P-44 |
| ½ yard | Grass Mini - Red (B) | 8784-88* |
| ¼ yard | Mini Snowflakes - Cream/Red (C) | 8782-48 |
| ¼ yard | Mini Snowflakes - Red (D) | 8782-88 |
| ⅓ yard | Candy Cane Bouquets - Cream (E) | 8780-44 |
| ⅓ yard | Dots - Cream (F) | 8783-44 |
| ½ yard | Character Toss - Green (G) | 8779-66 |
| 1 ½ yards | Character Toss - Green (Backing) | 8779-66 |

*Includes binding

Cutting Instructions

Please note: all strips are cut across the width of fabric (WOF) from selvage to selvage unless otherwise noted.

From the Rudy's Panel - Cream (A), fussy cut:

- (2) 7 ½" x 22 ½" strips, each centered on the candy cane sections.

From the Grass Mini - Red (B), cut:

- (2) 1 ¾" x WOF strips. Sub-cut strips into (13) 1 ¾" x 4 ¼" strips.
- (4) 2 ½" x WOF strips for the binding.

From the Mini Snowflakes - Cream/Red (C), cut:

- (2) 1 ¾" x WOF strips. Sub-cut strips into (13) 1 ¾" x 4 ¼" strips.

From the Mini Snowflakes - Red (D), cut:

- (2) 1 ¾" x WOF strips. Sub-cut strips into (13) 1 ¾" x 4 ¼" strips.

From the Candy Cane Bouquets - Cream (E), cut:

- (2) 4 ¼" x WOF strips. Sub-cut strips into (12) 4 ¼" squares.

From the Dots - Cream (F), cut:

- (2) 2 ⅛" x WOF strips. Sub-cut strips into (2) 2 ⅛" x 22 ½" strips.
- (1) 2 ⅛" x WOF strip. Sub-cut strip into (2) 2 ⅛" x 19 ¼" strips.

From the Character Toss - Green (G), cut:

- (2) 3 ½" x WOF strips. Sub-cut strips into (2) 3 ½" x 36 ½" strips.
- (2) 3 ½" x WOF strips. Sub-cut strips into (2) 3 ½" x 28 ½" strips.

From the Character Toss - Green (Backing), cut:

- (1) 36" x 50" strip for the back.

Runner Sewing Instructions

1. Sew (1) 1 ¾" x 4 ¼" Fabric B strip, (1) 1 ¾" x 4 ¼" Fabric C strip and (1) 1 ¾" x 4 ¼" Fabric D strip together lengthwise and in that order to make (1) Unit 1 strip (Fig. 1). Repeat to make (13) Unit 1 strips total.

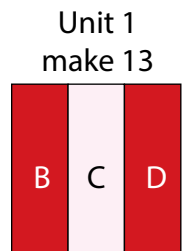


Fig. 1

2. Sew (3) Unit 1 strips and (2) 4 ¼" Fabric E squares together, alternating them, to make Row One. Repeat to make Row Three and Row Five.
3. Sew (3) 4 ¼" Fabric E squares and (2) Unit 1 strips together, alternating them, to make Row Two. Repeat to make Row Four.
4. Sew the (5) rows together, in numerical order, to make the Center Block (Fig. 2).
5. Sew (1) 2 ⅛" x 19 ¼" Fabric F strip to each side of the Center Block. Sew (1) 2 ⅛" x 22 ½" Fabric F strip to the top and to the bottom of the Center Block (Fig. 2).

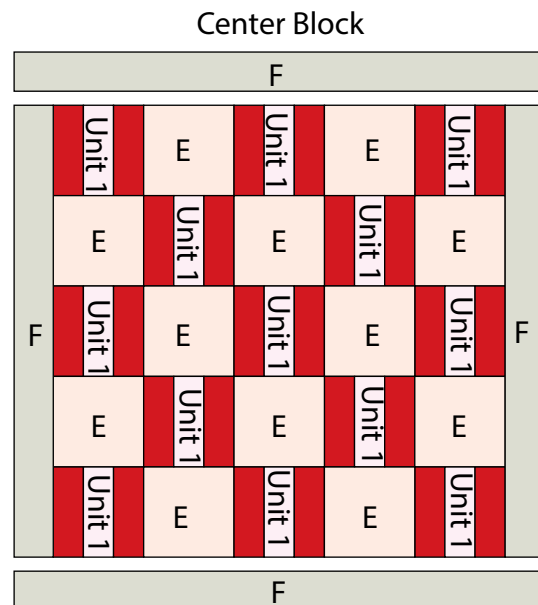


Fig. 2

REINDEER MAGIC

Quilt 3

Runner Top Assembly

(Refer to the Runner Layout while assembling.)

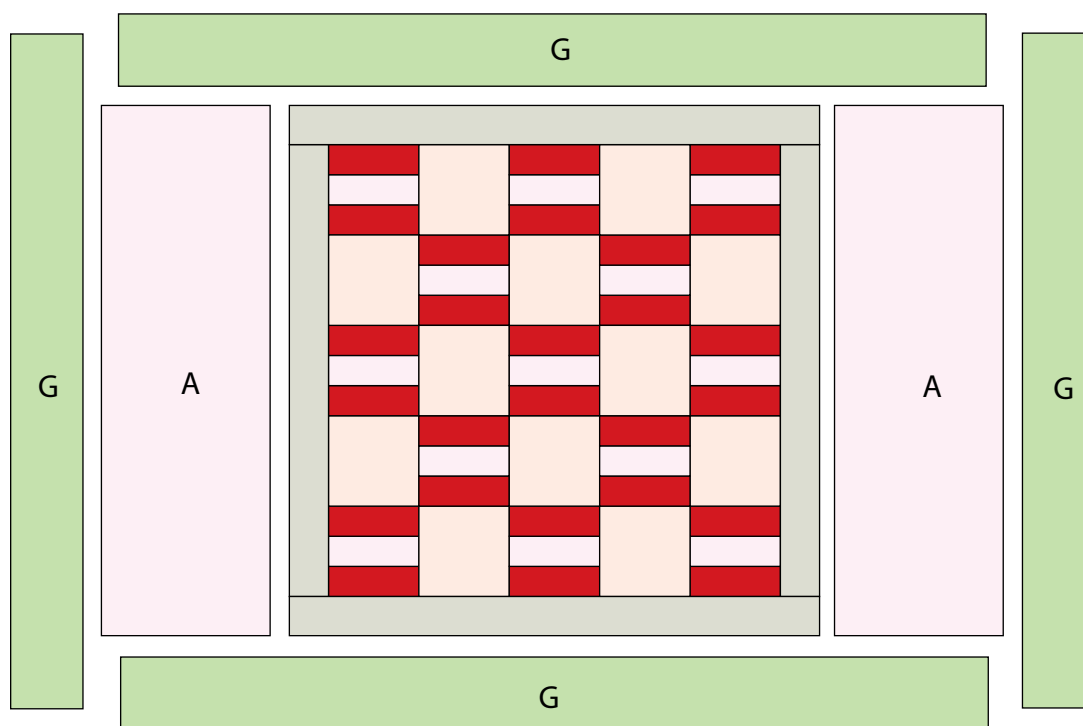
6. Sew (1) 7 ½" x 22 ½" Fabric A strip to the top and to the bottom of the Center Block.

7. Sew (1) 3 ½" x 36 ½" Fabric G strip to each side of the Center Block. Sew (1) 3 ½" x 28 ½" Fabric G strip to the top and to the bottom of the Center Block to make the runner top.

8. Layer and quilt as desired.

9. Sew the (4) 2 ½" x WOF Fabric B strips together, end to end with 45-degree seams, to make the binding. Fold this long strip in half lengthwise with wrong sides together and press.

10. Bind as desired.



Runner Layout

Every effort has been made to ensure that all projects are error free. All the information is presented in good faith, however no warranty can be given nor results guaranteed as we have no control over the execution of instructions. Therefore, we assume no responsibility for the use of this information or damages that may occur as a result. When errors are brought to our attention, we make every effort to correct and post a revision as soon as possible. Please make sure to check www.henryglassfabrics.com for pattern updates prior to starting the project. We also recommend that you test the project prior to cutting for kits. Finally, all free projects are intended to remain free to you and are not for resale.