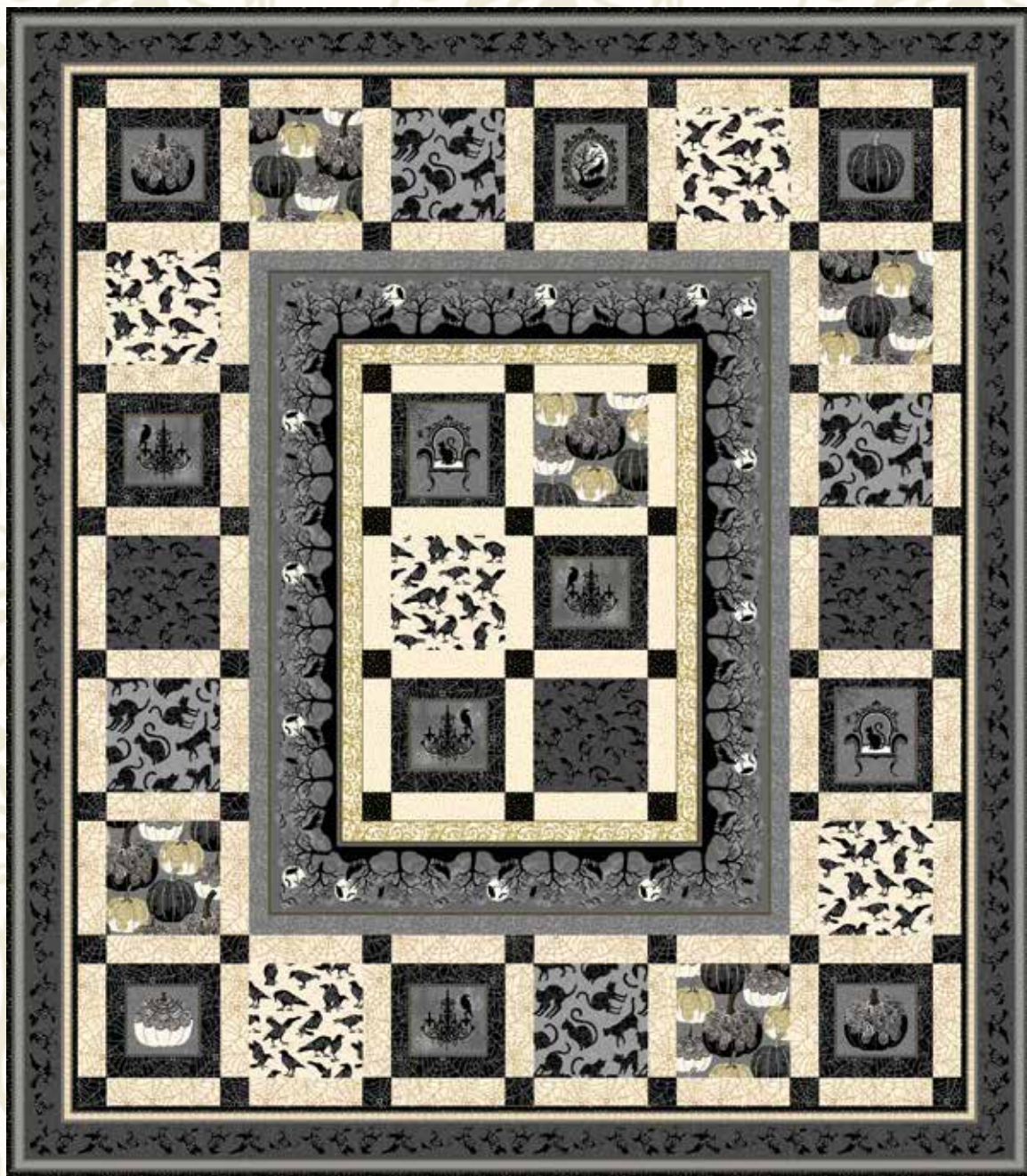


Spellbound



Quilt 1

Skill Level: Advanced Beginner

A Free Project Sheet From

 **Henry Glass & Co., Inc.**



[facebook](#)

Finished Quilt Size: 53 ½" x 61"
49 West 37th Street, New York, NY 10018
tel: 212-686-5194 fax: 212-532-3525
Toll Free: 800-294-9495
www.henryglassfabrics.com

SPELLBOUND Quilt 1

Finished Quilt Size: 53 1/2" x 61"

Fabrics in the Collection



Decorative Halloween Stripe - Cream/Grey
9912M-49



Decorative Scroll - Grey
9911-90



Decorative Scroll - Cream
9911M-40



Bird Silhouettes - Grey
9910-90



Bird Silhouettes - Cream
9910-40



Spider Web - Black
9909-99



Spider Web - Cream
9909M-40



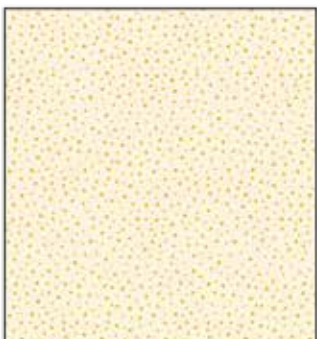
Cat Silhouettes - Black
9908-99



Cat Silhouettes - Grey
9908-90



Metallic Dot - Black
9907M-99



Metallic Dot - Cream
9907M-40



Decorative Pumpkins - Grey
9906M-90



Decorative Halloween Boxes - Black
9905M-99

Materials

¾ yard	Decorative Halloween Boxes - Black (A)	9905M-99
⅔ yard	Spider Web - Black (B)	9909-99
¼ yard	Decorative Pumpkins - Grey (C)	9906M-90
¼ yard	Cat Silhouettes - Grey (D)	9908-90
¼ yard	Bird Silhouettes - Cream (E)	9910-40
¼ yard	Bird Silhouettes - Grey (F)	9910-90
2 yards	Decorative Halloween Stripe - Cream/Grey (G)	9912M-49
¼ yard	Spider Web - Cream (H)	9909M-40
⅔ yard	Metallic Dot - Black (I)	9907M-99*
⅞ yard	Decorative Scroll - Cream (J)	9911M-40
3 ½ yards	Cat Silhouettes - Black (Backing)	9908-99

*Includes binding

Quilt Cutting Instructions

Please note: all strips are cut across the width of fabric (WOF) from selvage to selvage edge unless otherwise noted.

From the Decorative Halloween Boxes - Black (A):

- Add fusible web to the back of the fabric and then fussy cut (11) assorted (your choice) blocks following the frame outline on each block.

From the Spider Web - Black (B), cut:

- (2) 6 ½" x WOF strips. Sub-cut strips into (11) 6 ½" squares.
- (3) 2" x WOF strips. Sub-cut strips into (44) 2" squares.

From the Decorative Pumpkins - Grey (C), cut:

- (1) 6 ½" x WOF strip. Sub-cut strip into (5) 6 ½" squares.

From the Cat Silhouettes - Grey (D), cut:

- (1) 6 ½" x WOF strip. Sub-cut strip into (4) 6 ½" squares.

From the Bird Silhouettes - Cream (E), cut:

- (1) 6 ½" x WOF strip. Sub-cut strip into (5) 6 ½" squares.

From the Bird Silhouettes - Grey (F), cut:

- (1) 6 ½" x WOF strip. Sub-cut strip into (3) 6 ½" squares.

From the Decorative Halloween Stripe - Cream/Grey (G), cut:

- (2) 4" x 65" strips from the length of fabric (LOF), centered on the thick border.
- (2) 4" x 58" LOF strips.
- (2) 6 ½" x 40" LOF strips.
- (2) 6 ½" x 33" LOF strips.

From the Spider Web - Cream (H), cut:

- (1) 6 ½" x WOF strip. Sub-cut strip into (17) 2" x 6 ½" strips.

From the Metallic Dot - Black (I), cut:

- (1) 2" x WOF strip. Sub-cut strip into (12) 2" squares.
- (6) 2 ½" x WOF strips for the binding.

From the Decorative Scroll - Cream (J), cut:

- (4) 6 ½" x WOF strips. Sub-cut strips into (66) 2" x 6 ½" strips.

From the Cat Silhouettes - Black (Backing), cut:

- (2) 62" x WOF strips for the backing. Sew the strips together and trim to make the 62" x 69" back.

Sewing Instructions

1. Center a Fabric A block onto the center of (1) 6 1/2" Fabric B square. Press the block in place. Repeat for the remaining Fabric A blocks and 6 1/2" Fabric B squares.

2. Finish the raw edges of each block with a decorative stitch such as a buttonhole or satin stitch to make (11) applique blocks (Fig. 1).

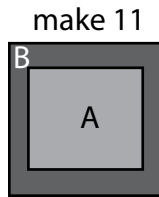


Fig. 1

3. Sew (4) 2" Fabric I squares and (3) 2" x 6 1/2" Fabric H strips together end to end, alternating them, to make (1) IH strip. Repeat to make (3) IH strips total.

4. Sew (4) 2" x 6 1/2" Fabric H strips, two applique blocks and (1) 6 1/2" Fabric E square together to make one AEA strip.

5. Sew (4) 2" x 6 1/2" Fabric H strips, (1) 6 1/2" Fabric C square, one applique block and one 6 1/2" Fabric F square together to make (1) CAF strip.

6. Sew the (3) IH strips, (1) AEA strip and (1) CAF strip together to make the Center Block (Fig. 2).

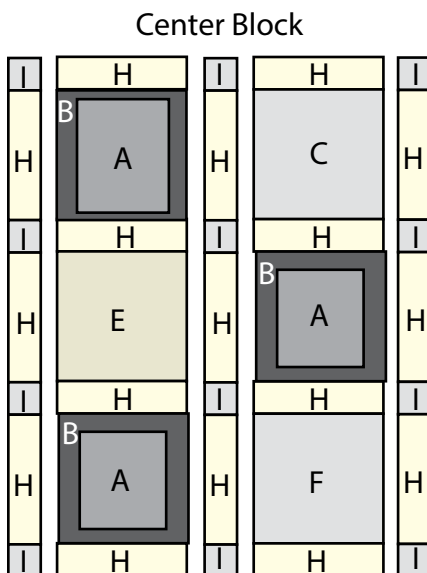


Fig. 2

7. Sew (5) 2" x 6 1/2" Fabric J strips and (4) 2" Fabric B squares together to make (1) JB strip. Repeat to make (4) JB strips total.

8. Sew (1) 6 1/2" Fabric E square, (4) 2" x 6 1/2" Fabric J strips, (1) applique block, (1) 6 1/2" Fabric F square, (1) 6 1/2" Fabric D square and (1) 6 1/2" Fabric C square together to make (1) EC strip. Repeat to make a second EC strip.

9. Sew (1) JB strip to each side of (1) EC strip to make the Left Side Border (Fig. 3).

10. Sew (1) JB strip to each side of (1) EC strip to make the Right Side Border (Fig. 4). *Note: The orientation of the EC strip.*

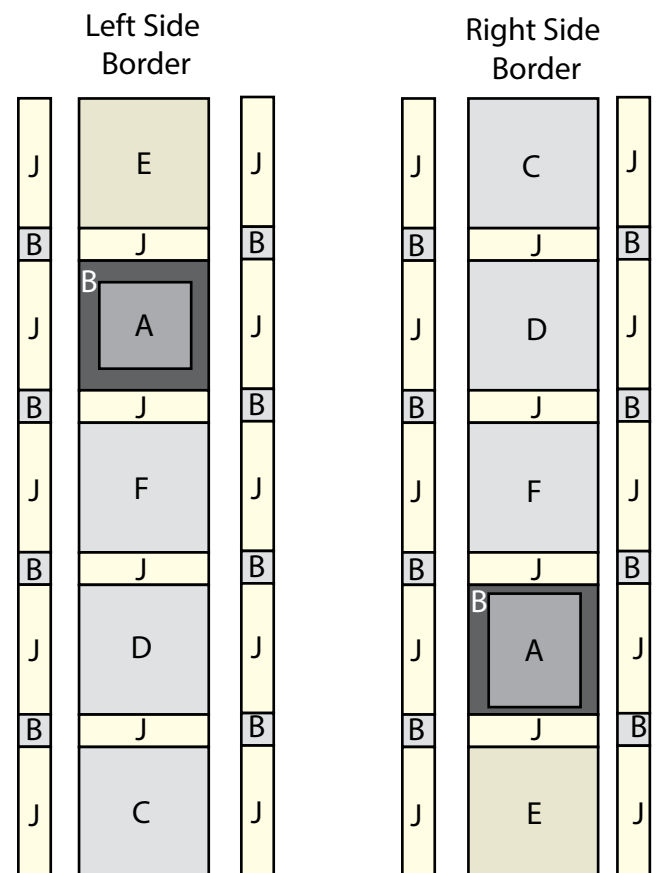


Fig. 3

Fig. 4

11. Sew (7) 2" Fabric B squares, (6) 2" x 6 1/2" Fabric J strips together to make (1) BB strip. Repeat to make (4) BB strips total.

12. Sew (7) 2" x 6 1/2" Fabric J strips, (3) applique blocks, (1) 6 1/2" Fabric C square, (1) 6 1/2" Fabric D square and (1) 6 1/2" Fabric E square together to make (1) AA strip. Repeat to make a second AA strip.

13. Sew (1) BB strip to the top and to the bottom of (1) AA strip to make the Top Border (Fig. 5).

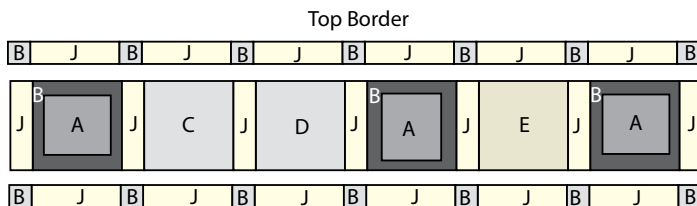


Fig. 5

14. Sew (1) BB strip to the top and to the bottom of (1) AA strip to make the Bottom Border (Fig. 6). *Note: The orientation of the AA strip.*

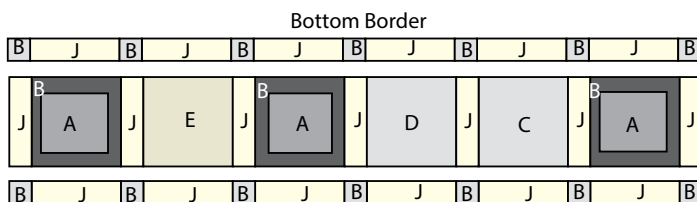


Fig. 6

Quilt Top Assembly

Refer to the Quilt Layout while assembling.

15. Center (1) 6 1/2" x 40" Fabric G strip on one side of the Center Block and pin in place. Start sewing the strip a 1/4" from the top edge of the Center Block and stop a 1/4" from the bottom edge. **DO NOT TRIM THE EXCESS.** Repeat with the opposite side.

16. Repeat Step 15 to sew (1) 6 1/2" x 33" Fabric G strip to the top and to the bottom of the Center Block, making sure to stop and start 1/4" away from each end of the Center Block. To miter each corner, fold the quilt top on a diagonal, wrong side together. This should line up the strips from adjacent sides (Fig. 7).

17. Starting at the sewn seam (represented by the arrow in Figure 7), draw a 45-degree line to the edge of the fabric. Sew on the drawn line. Trim the excess fabric leaving a 1/4" seam. Repeat this step with the remaining corners.

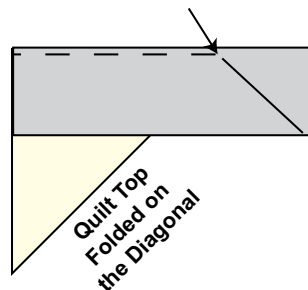


Fig. 7

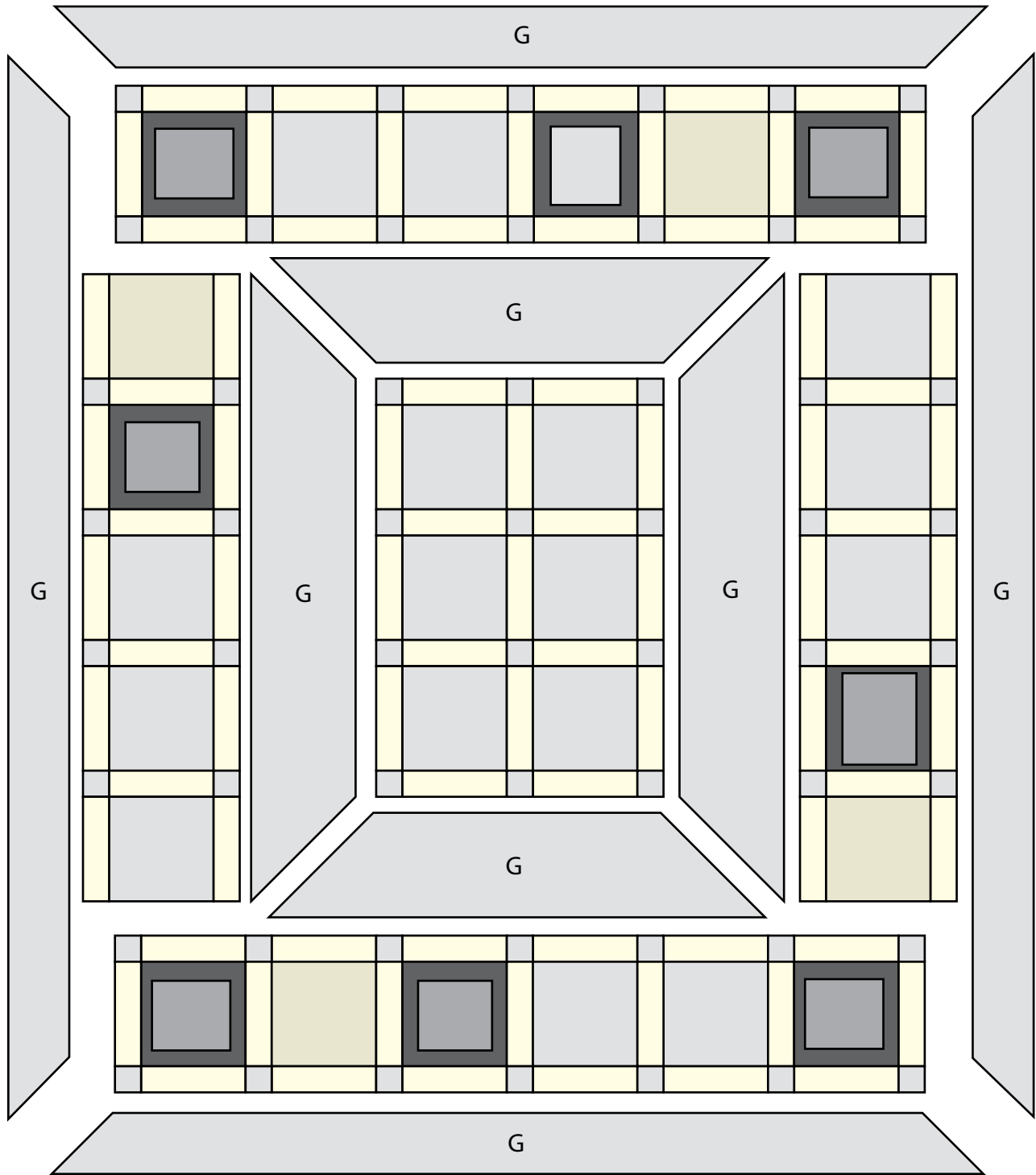
18. Sew the Left Side Border and the Right Side Border to the Center Block. Sew the Top Border and the Bottom Border to the Center Block to make the quilt top.

19. Repeat Steps 15-17 using the 4" x 65" Fabric G strip and the 4" x 58" Fabric G strip.

20. Layer and quilt as desired.

21. Sew the (6) 2 1/2" x WOF Fabric I strips together, end to end with 45-degree seams, to make the binding. Fold this long strip in half lengthwise with wrong sides together and press.

22. Bind as desired.



Quilt Layout