

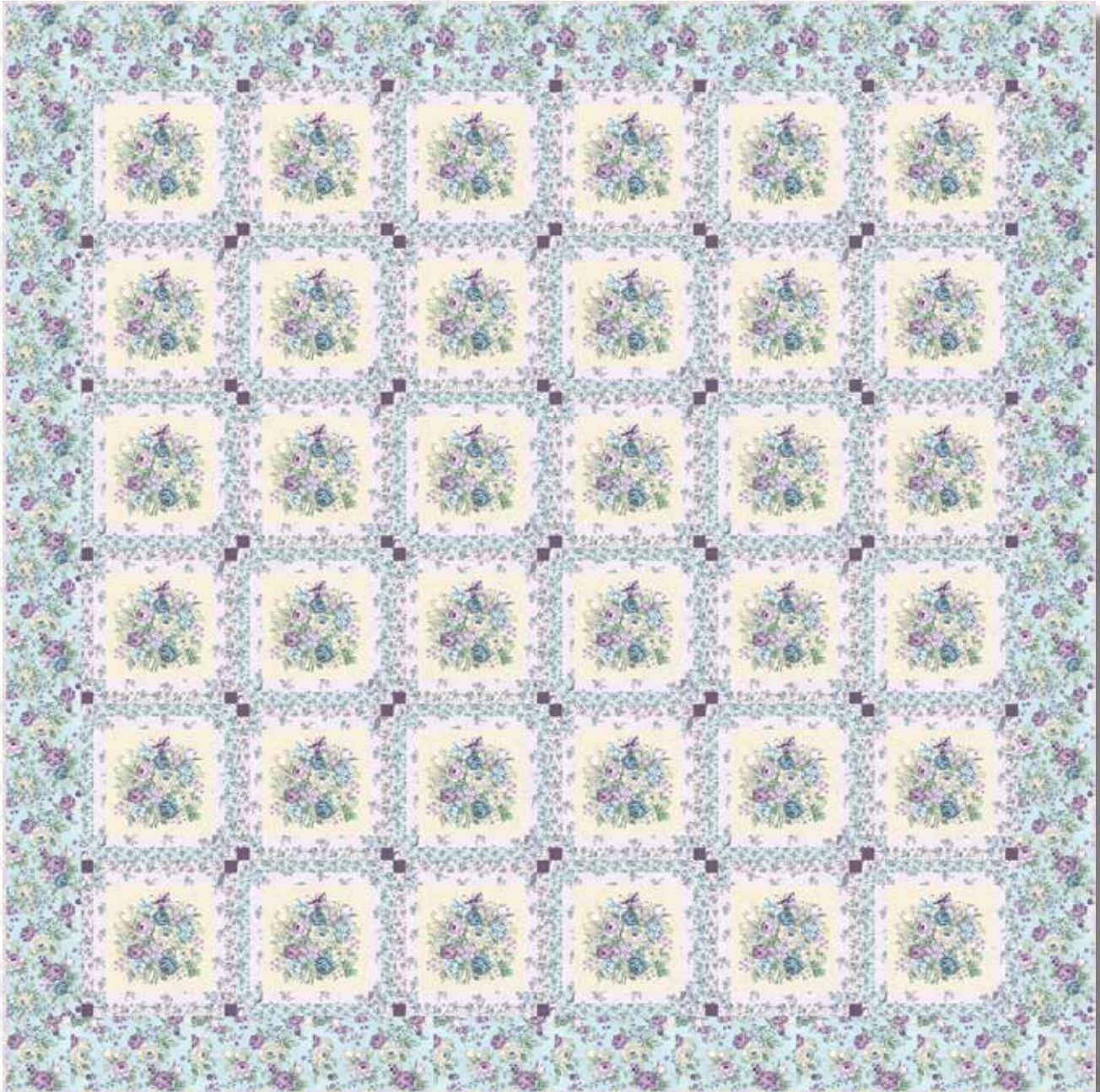
Twilight Garden



.....
A Free Project Sheet
NOT FOR RESALE
.....

By Mary Jane Carey

Quilt Design by Mary Jane Carey



Quilt 1

Skill Level: Advanced Beginner

 Henry Glass & Co., Inc.



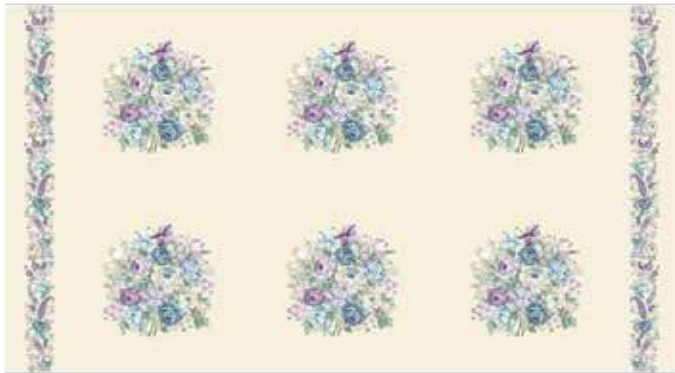
facebook

Finished Quilt Size: 87" x 87"
49 West 37th Street, New York, NY 10018
tel: 212-686-5194 fax: 212-532-3525
Toll Free: 800-294-9495
www.henryglassfabrics.com

TWILIGHT GARDEN Quilt 1

Finished Quilt Size: 87" x 87"

Fabrics in the Collection



Bouquets Panel - Linen
8872-44



Border Stripe - Linen
8871-44



Allover Floral - Spa Blue
8873-11



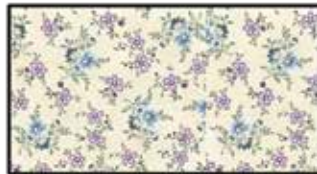
Allover Floral - Linen
8873-44



Allover Floral - Eggplant
8873-58



Small Calico - Spa Blue
8874-11



Small Calico - Linen
8874-44



Small Calico - Lilac
8874-55



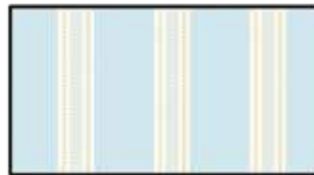
Paisley - Spa Blue
8875-11



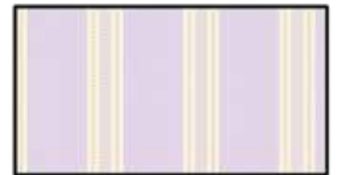
Paisley - Linen
8875-44



Paisley - Lilac
8875-55



Awning Stripe - Spa Blue
8876-11



Awning Stripe - Lilac
8876-55



Awning Stripe - Eggplant
8876-58



Tossed Buttercups - Spa Blue
8877-11



Tossed Buttercups - Linen
8877-44



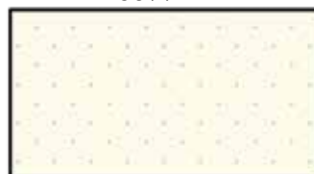
Tossed Buttercups - Lilac
8877-55



Primroses - Spa Blue
8878-11



Primroses - Lilac
8878-55



Polka Dots - Linen/Blue
8879-41



Polka Dots - Linen/Lilac
8879-45



Polka Dots - Eggplant
8879-58

Materials

6 panels	Bouquets Panel - Linen (A)	8872-44
1 2/3 yards	Tossed Buttercups - Lilac (B)	8877-55
1/3 yard	Paisley - Spa Blue (C)	8875-11
1 1/3 yards	Small Calico - Linen (D)	8874-44
1/4 yard	Paisley - Lilac (E)	8875-55
1 1/3 yards	Small Calico - Lilac (F)	8874-55
1/4 yard	Awning Stripe - Eggplant (G)	8876-58
1 3/4 yards	Allover Floral - Spa Blue (H)	8873-11
1 yard	Awning Stripe - Lilac (I)	8876-55*
8 yards	Primroses - Lilac (Backing)	8878-55

*Includes bias binding

Cutting Instructions

Please note: all strips are cut across the width of fabric (WOF) from selvage to selvage unless otherwise noted.

From the Bouquets Panel - Linen (A), fussy cut:

- (36) 9" squares, each centered on a bouquet.

From the Tossed Buttercups - Lilac (B), cut:

- (3) 9" x WOF strips.
- (3) 9" x WOF strips. Sub-cut (72) 1 1/2" x 9" strips.

From the Paisley - Spa Blue (C), cut:

- (6) 1 1/2" x WOF strips.

From the Small Calico - Linen (D), cut:

- (2) 11" x WOF strips.
- (2) 11" x WOF strips. Sub-cut (36) 1 1/2" x 11" strips.

From the Paisley - Lilac (E), cut:

- (4) 1 1/2" x WOF strips.

From the Small Calico - Lilac (F), cut:

- (2) 11" x WOF strips.
- (2) 11" x WOF strips. Sub-cut (36) 1 1/2" x 11" strips.

From the Awning Stripe - Eggplant (G), cut:

- (4) 1 1/2" x WOF strips.

From the Allover Floral - Spa Blue (H), cut:

- (5) 6 1/2" x WOF strips. Sew the strips together end to end with diagonal seams and cut (2) 6 1/2" x 87 1/2" strips.
- (4) 6 1/2" x WOF strips. Sew the strips together end to end with diagonal seams and cut (2) 6 1/2" x 75 1/2" strips.

From the Awning Stripe - Lilac (I), cut:

- (360") of 2 1/2" bias strips for the binding.

From the Primroses - Lilac (Backing), cut:

- (3) 95" x WOF strips for the backing. Sew the strips together and trim to make the 95" x 95" back.

Sewing Instructions

1. Sew (1) 1 1/2" x WOF Fabric C strip to each side of (1) 9" x WOF Fabric B strip lengthwise to make (1) CBC strip set (Fig. 1). Repeat to make (3) CBC strip sets total.
2. Cut the CBC strip sets into (72) 1 1/2" x 11" Unit 1 strips (Fig. 2).

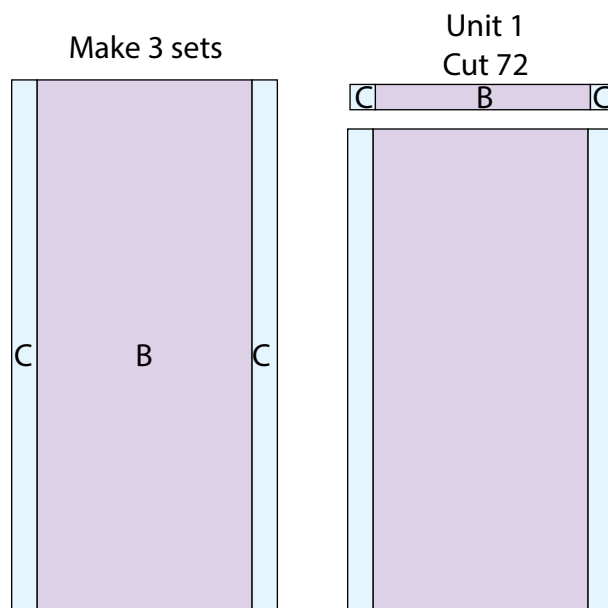


Fig. 1

Fig. 2

3. Sew (1) 1 1/2" x WOF Fabric E strip to each side of (1) 11" x WOF Fabric D strip lengthwise to make (1) EDE strip set (Fig. 3). Repeat to make a second EDE strip set.
4. Cut the EDE strip sets into (36) 1 1/2" x 13" Unit 2 strips (Fig. 4).

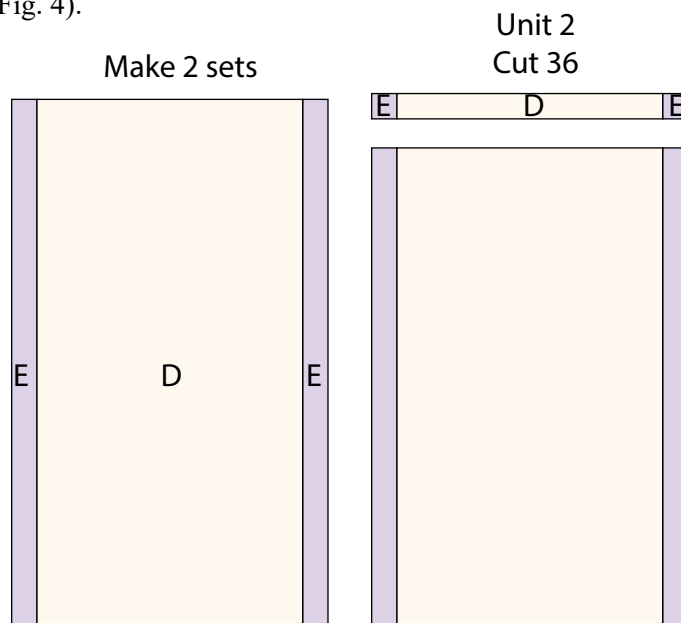


Fig. 3

Fig. 4

5. Sew (1) 1 1/2" x WOF Fabric G strip to each side of (1) 11" x WOF Fabric F strip lengthwise to make (1) GFG strip set (Fig. 5). Repeat to make a second GFG strip set.

6. Cut the GFG strip sets into (36) 1 1/2" x 13" Unit 3 strips (Fig. 6).

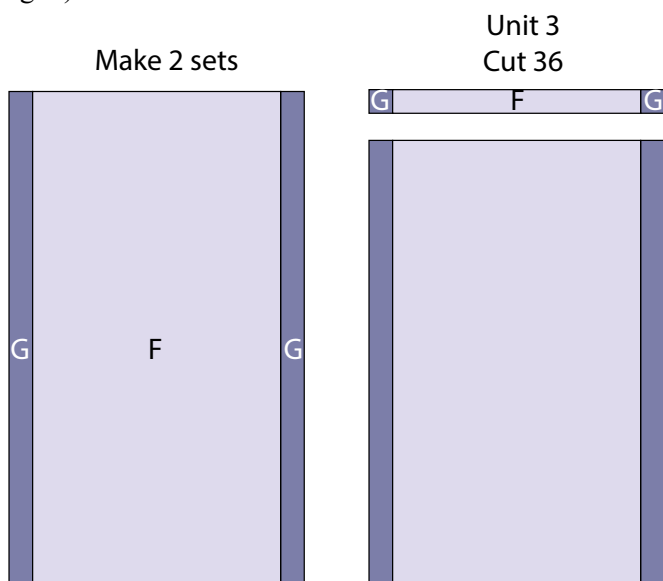


Fig. 5

Fig. 6

7. Sew (1) 1 1/2" x 9" Fabric B strip to each side of (1) 9" Fabric A square. Sew (1) Unit 1 strip to the top and to the bottom of the Fabric A square to make (1) A block. Repeat to make (36) A blocks total.

8. Sew (1) 1 1/2" x 11" Fabric D strip to each side of (1) A block. Sew (1) Unit 2 strip to the top and to the bottom of the Fabric A block to make (1) Block One square (Fig. 7). Repeat to make (18) Block One squares total.

9. Sew (1) 1 1/2" x 11" Fabric F strip to each side of (1) A block. Sew (1) Unit 3 strip to the top and to the bottom of the Fabric A block to make (1) Block Two square (Fig. 8). Repeat to make (18) Block Two squares total.

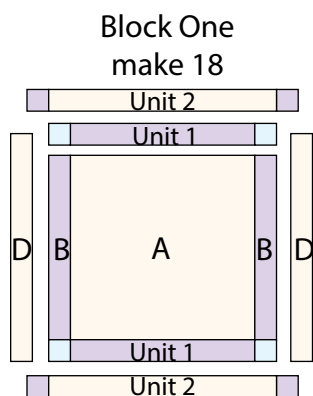


Fig. 7

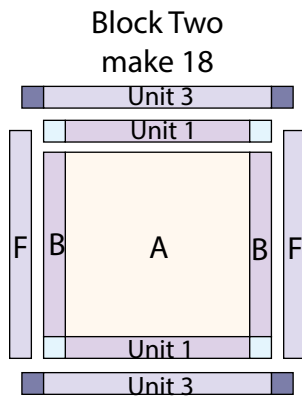


Fig. 8

Quilt Top Assembly

(Refer to the *Quilt Layout while assembling.*)

10. Sew (3) Block One squares and (3) Block Two squares together, alternating them, to make Row One. Repeat to make Rows Three and Five.

11. Sew (3) Block Two squares and (3) Block One squares together, alternating them, to make Row Two. Repeat to make Rows Four and Six.

12. Sew the (6) rows together in numerical order to make the Center Block.

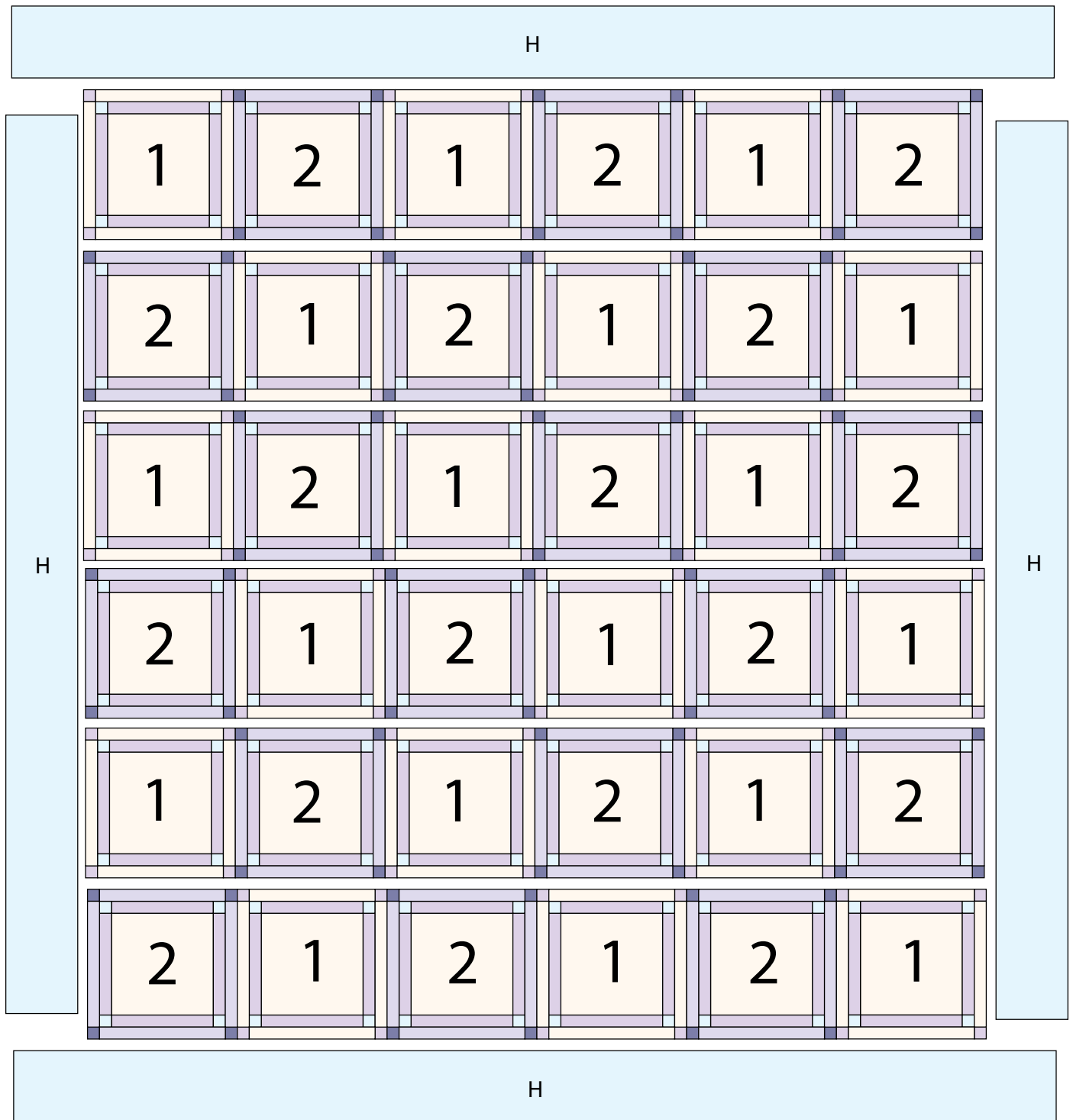
13. Sew (1) 6 1/2" x 75 1/2" Fabric H strip to each side of the Center Block. Sew (1) 6 1/2" x 87 1/2" Fabric H strip to the top and to the bottom of the Center Block to make the quilt top.

14. Layer and quilt as desired.

15. Sew the 360" of 2 1/2" bias binding strips together, end to end with 45-degree seams, to make the binding. Fold this long strip in half lengthwise with wrong sides together and press.

16. Bind as desired.

TWILIGHT GARDEN Quilt 1



Quilt Layout

Every effort has been made to ensure that all projects are error free. All the information is presented in good faith, however no warranty can be given nor results guaranteed as we have no control over the execution of instructions. Therefore, we assume no responsibility for the use of this information or damages that may occur as a result. When errors are brought to our attention, we make every effort to correct and post a revision as soon as possible. Please make sure to check www.henryglassfabrics.com for pattern updates prior to starting the project. We also recommend that you test the project prior to cutting for kits. Finally, all free projects are intended to remain free to you and are not for resale.