

Winter Blessings

by Kim Diehl



Finished Quilt Size: 64½" x 64½"
A Free Project Sheet from

 Henry Glass & Co., Inc.



49 West 37th Street, New York, NY 10018
tel: 212-686-5194 • fax: 212-532-3525
Toll-free: 800-294-9495
www.henryglassfabrics.com

facebook

Winter Blessings

Finished block size: 14 x 14"

Finished quilt size: 64½" x 64½"

MATERIALS

1½ yards of cream feathered swirl print for blocks (6372-44)
1½ yards of cream square-in-a-square print for inner border (6375-44)
1½ yards of cream flower bud print for outer border (6370-44)
1 yard of red wallpaper stripe for blocks, borders, and binding (6369-88)
½ yard *each* of five assorted red prints for blocks, appliqués, and borders (6370-88; 6371-88; 6372-88; 6373-88; 6374-88)
½ yard *each* of six assorted green prints for blocks, appliqués, and borders (6369-66; 6371-66; 6373-66; 6374-66; 6375-66; 6376-66)
4 yards of fabric for backing (Kim suggests cream flower bud, 6370-44)
71" x 71" square of batting
Water-soluble liquid glue for fabric
Bias bar to make ⅜" stems
Basic supplies for quilting and your favorite appliqué method

CUTTING

Cut all pieces across the width of the fabric in the order given, unless otherwise noted. When cutting sets, cut the pieces in each set from the same print, and keep the pieces in each set together.

From the red wallpaper stripe, cut:

6 strips, 1½" x 42"
7 strips, 2½" x 42" (binding)

Reserve the remainder of the print for the patchwork.

From the ½-yard cuts of the 5 assorted red prints and the reserved red wallpaper stripe, cut a total of:

5 sets of:
2 squares, 3⅞" x 3⅞" (combined total of 10); cut each square in half diagonally *once* to yield 4 triangles (combined total of 20)
4 rectangles, 2" x 8½" (combined total of 20)
4 sets of:
2 squares, 2⅞" x 2⅞" (combined total of 8); cut each square in half diagonally *once* to yield 4 triangles (combined total of 16)
4 rectangles, 1½" x 4½" (combined total of 16)
5 sets of:
2 squares, 1⅞" x 1⅞" (combined total of 10); cut each square in half diagonally *once* to yield 4 triangles (combined total of 20)
4 rectangles, 1" x 2½" (combined total of 20)

From the remainder of the assorted red prints and red wallpaper stripe, cut a combined total of:

30 squares, 4½" x 4½"
4 squares, 3½" x 3½"
4 squares, 2½" x 2½"
32 squares, 2" x 2"
8 blossom appliqués
48 berry appliqués

From the cream feathered swirl print, cut:

18 squares, 3⅞" x 3⅞"; cut each square in half diagonally *once* to yield 36 triangles
18 squares, 2⅞" x 2⅞"; cut each square in half diagonally *once* to yield 36 triangles
36 rectangles, 2" x 8½"

18 squares, 1⅞" x 1⅞"; cut each square in half diagonally *once* to yield 36 triangles

36 rectangles, 1½" x 4½"

36 rectangles, 1" x 2½"

From the green wallpaper stripe, cut:

4 strips, 1¼" x 42"; crosscut into 8 stem strips, 1¼" x 18"

Reserve the remainder of the print for the patchwork and appliqués.

From the ½-yard cuts of the 6 assorted green prints and the reserved green wallpaper stripe, cut a total of:

4 sets of:

2 squares, 3⅞" x 3⅞" (combined total of 8); cut each square in half diagonally *once* to yield 4 triangles (combined total of 16)

4 rectangles, 2" x 8½" (combined total of 16)

5 sets of:

2 squares, 2⅞" x 2⅞" (combined total of 10); cut each square in half diagonally *once* to yield 4 triangles (combined total of 20)

4 rectangles, 1½" x 4½" (combined total of 20)

4 sets of:

2 squares, 1⅞" x 1⅞" (combined total of 8); cut each square in half diagonally *once* to yield 4 triangles (combined total of 16)

4 rectangles, 1" x 2½" (combined total of 16)

From the remainder of the assorted green prints and green wallpaper stripe, cut a combined total of:

26 squares, 4½" x 4½"

9 squares, 2½" x 2½"

32 squares, 1½" x 1½"

104 leaf appliqués

From the lengthwise grain of the cream square-in-a-square print, cut:

4 strips, 6½" x 42½" (Please note that if you haven't prewashed your fabric, you may be able to cut these pieces from the width of your fabric.)

16 rectangles, 2" x 3½"

16 squares, 2" x 2"

From the cream flower bud print, cut:

28 rectangles, 4½" x 8½"

16 rectangles, 1½" x 2½"

16 squares, 1½" x 1½"

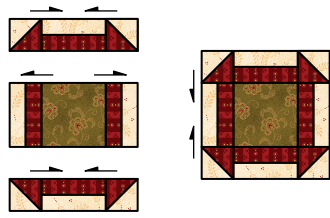
PIECING THE BLOCKS

Sew all pieces with right sides together using a ¼" seam allowance unless otherwise noted.

- 1 Select one set of matching red print 1" x 2½" rectangles and 1⅞" triangles, four cream feathered swirl print 1" x 2½" rectangles, and four cream feathered swirl print 1⅞" triangles.
- 2 Join each red 1" x 2½" rectangle to a cream 1" x 2½" rectangle along the long edges to make a pieced rectangle. Press the seam allowances away from the cream print. Join each red 1⅞" triangle to a cream 1⅞" triangle along the long diagonal edges to make a half-square-triangle unit. Press the seam allowances away from the cream print. Trim away the dog-ear points.

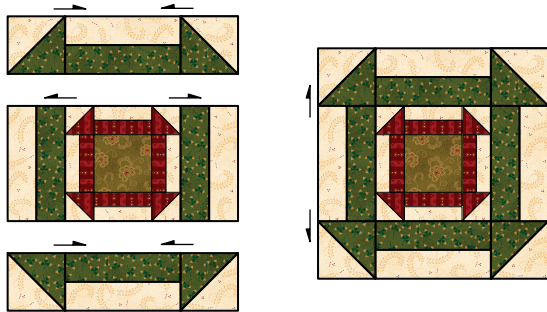


- 3 Lay out the pieced rectangles and half-square-triangle units from step 2 with a green print $2\frac{1}{2}$ " square to form the block center. Join the pieces in each horizontal row. Press the seam allowances toward the pieced rectangles. Join the rows. Press the seam allowances toward the middle row.



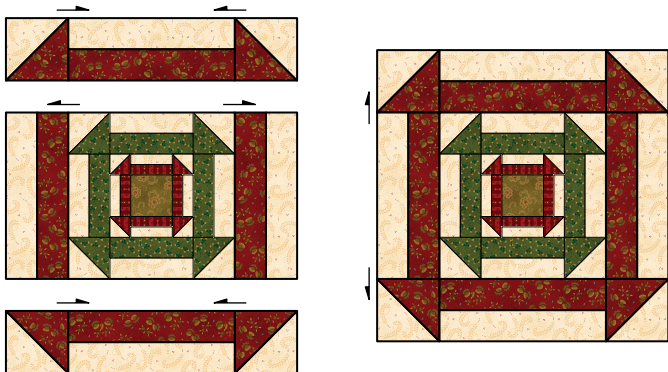
- 4 Select four cream feathered swirl print $1\frac{1}{2}$ " x $4\frac{1}{2}$ " rectangles and one set of matching green print $1\frac{1}{2}$ " x $4\frac{1}{2}$ " rectangles and $2\frac{7}{8}$ " triangles. Repeat step 2 to make four pieced rectangles and four pieced half-square-triangle units.

- 5 Lay out the pieced block center from step 3 and the pieced units from step 4 as shown. Join the pieces in each horizontal row. Press the seam allowances toward the pieced rectangles. Join the rows. Press the seam allowances away from the middle row.



- 6 Select four cream feathered swirl print 2 " x $8\frac{1}{2}$ " rectangles and one set of matching red print 2 " x $8\frac{1}{2}$ " rectangles and $3\frac{3}{8}$ " triangles. Repeat step 2 to make four pieced rectangles and four pieced half-square-triangle units.

- 7 Lay out the pieced block unit from step 5 and the pieced units from step 6 as shown. Join the pieces in each horizontal row. Press the seam allowances toward the pieced rectangles. Join the rows. Press the seam allowances away from the middle row. The pieced block should measure $14\frac{1}{2}$ " square, including the seam allowances.



- 8 Referring to the pictured quilt, repeat steps 1–7 to make five pieced blocks with a green center square and the outer row sewn from a red print, and four pieced blocks with a red center square and the outer row sewn from a green print.

PIECING THE QUILT CENTER

Using the pictured quilt as a guide, lay out nine pieced blocks in three horizontal rows of three blocks each, alternating the red and green center squares, to form the quilt center. Join the blocks in each horizontal row. Press the seam allowances open. Join the rows, press the seam allowances open. The pieced quilt center should measure $42\frac{1}{2}$ " square, including the seam allowances.

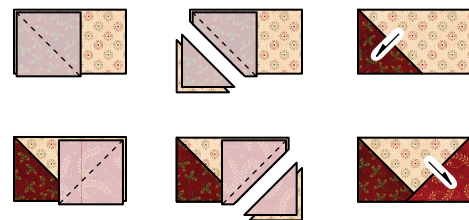
APPLIQUÉING, PIECING, AND ADDING THE INNER BORDER

Please use your favorite method to stitch the appliqués, or refer to any of Kim's "Simple" series of books for her easy invisible machine appliqué method.

- 1 Fold each cream square-in-a-square print $6\frac{1}{2}$ " x $42\frac{1}{2}$ " strip in half lengthwise, right sides together, and use a hot, dry iron to lightly press a center crease.
- 2 Fold a green wallpaper stripe $1\frac{1}{4}$ " x 18" strip in half lengthwise, wrong sides together, and use a scant $\frac{1}{4}$ " seam allowances to stitch along the long raw edges to make a tube. Use the bias bar to press the tube flat, centering the seam allowance so it will be hidden from the front. Remove the bar and apply small dots of liquid glue for fabric underneath the pressed seam allowance at approximately $\frac{1}{2}$ " intervals. Use the iron to heat set the glue and anchor the seam in place. Repeat to make eight prepared stems.



- 3 Apply small dots of liquid fabric glue at approximately $\frac{1}{2}$ " intervals along the pressed seam allowance of a prepared stem. Center the stem over the pressed crease at one end of a border strip from step 1, aligning the raw stem edge with the raw edge of the strip. Use your hand to press the stem onto the strip. Repeat on the remaining end of the border strip.
- 4 Using the pictured quilt as a guide, lay out 12 leaves and six berries along the stem on one end of the border strip; place one blossom and a leaf at the tip of the stem, overlapping the raw stem edge by approximately $\frac{1}{4}$ ". Repeat on the remaining end of the border strip, placing the appliqués to form a mirror-image of the pieces on the opposite side. Work from the bottom layer to the top to stitch the appliqués in place.
- 5 Repeat steps 3 and 4 to appliqué a total of four inner-border strips.
- 6 Use a pencil and an acrylic ruler to draw a diagonal line from corner to corner on the wrong side of each assorted red print 2 " square. Layer a prepared square onto one end of a cream square-in-a-square print 2 " x $3\frac{1}{2}$ " rectangle. Stitch together the pair along the drawn line. Fold the resulting triangle open, aligning the point with the point of the cream rectangle; press. Trim away the excess layers underneath the top triangle, leaving a $\frac{1}{4}$ " seam allowance. In the same manner, layer, stitch, press, and trim a second red print square on the remaining end of the rectangle to form a mirror-image point. Repeat for a total of 16 pieced flying-geese units for the star points.

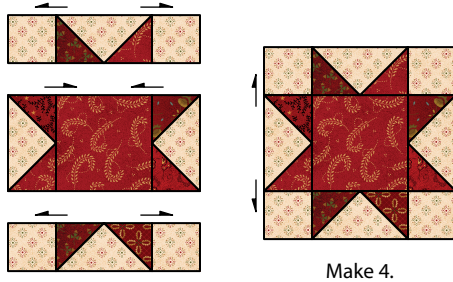


Make 16.

Winter Blessings

Fabrics in the Collection

- 7 Lay out one red print $3\frac{1}{2}$ " square, four flying-geese units, and four cream square-in-a-square print 2" squares to form a Star block. Join the pieces in each horizontal row. Press the seam allowances away from the flying-geese units. Join the rows. Press the seam allowances away from the middle row. Repeat for a total of four pieced red Star blocks measuring $6\frac{1}{2}$ " square, including the seam allowances.



Make 4.

- 8 Join an appliquéd border strip to the right and left sides of the quilt center. Press the seam allowances toward the border strips.
- 9 Join a pieced red Star block to each end of the remaining appliquéd border strips. Press the seam allowances away from the Star blocks. Join these pieced strips to the remaining sides of the quilt center. Press the seam allowances away from the quilt center.

PIECING AND ADDING THE MIDDLE BORDER

- 1 Cut two of the red wallpaper stripe $1\frac{1}{2}$ " x 42" strips in half crosswise. Join a half-strip to one end of each remaining red wallpaper stripe $1\frac{1}{2}$ " x 42" strip. Press the seam allowances open. Trim each strip to a length of $54\frac{1}{2}$ ".
- 2 Join a pieced red middle border strip to the right and left sides of the quilt top. Press the seam allowances toward the red print. Join a green print $1\frac{1}{2}$ " square to each end of the remaining pieced red strips. Press the seam allowances toward the red print. Join these pieced strips to the remaining sides of the quilt top. Press the seam allowances toward the red print.

PIECING AND ADDING THE OUTER BORDER

- 1 Referring to steps 6 and 7 of "Appliquing, Piecing, and Adding the Inner Border," use the assorted green print $2\frac{1}{2}$ " and $1\frac{1}{2}$ " squares, the cream flower bud print $1\frac{1}{2}$ " x $2\frac{1}{2}$ " rectangles, and the cream flower bud print $1\frac{1}{2}$ " squares to piece four green Star blocks measuring $4\frac{1}{2}$ " square, including the seam allowances.
- 2 Using the assorted red and green print $4\frac{1}{2}$ " squares and the cream flower bud print $4\frac{1}{2}$ " x $8\frac{1}{2}$ " rectangles, follow step 6 of "Appliquing, Piecing, and Adding the Inner Border" to make 28 pieced flying-geese units, positioning the colors randomly.
- 3 Using the pictured quilt as a guide, lay out seven flying-geese units end to end. Join the units. Press the seam allowances open. Repeat for a total of four pieced outer-border strips.
- 4 Join the cream edge of a pieced border strip to the right and left sides of the quilt top. Press the seam allowances toward the quilt center. Join a green Star block to each end of the remaining outer-border strips. Press the seam allowances toward the Star blocks. Join the cream edge of these pieced strips to the remaining sides of the quilt top. Press the seam allowances toward the quilt center. The completed quilt top should now measure $64\frac{1}{2}$ " square, including the seam allowances.

COMPLETING THE QUILT

Layer the quilt top, batting, and backing. Quilt the layers. Join the seven red wallpaper stripe $2\frac{1}{2}$ " x 42" strips into one length and use it to bind the quilt.



6369-66



6369-88



6370-44



6370-88



6371-66



6371-88



6372-44



6372-88



6373-66



6373-88



6374-66



6374-88



6375-44



6375-66



6376-66



6376-88